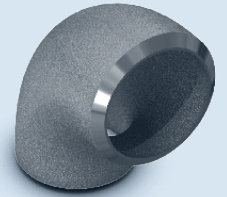
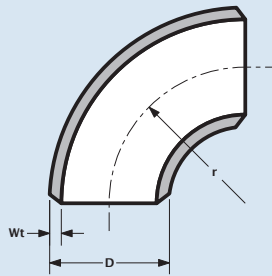




ASTM/ASME A/SA403



Elbow													
Nominal Pipe Size	Outside Diameter	Radius	sch10s		sch40s/STD		sch80s/XS		sch160		schXXS		
			NPS	D	r	Wt	kg/pc	Wt	kg/pc	Wt	kg/pc	Wt	kg/pc
3/8"	17.15	note	1.65	-	2.31	-	3.20	-	-	-	-	-	-
1/2"	21.34	38.10	2.11	0.06	2.77	0.08	3.73	0.11	4.78	0.14	7.47	0.22	
3/4"	26.70	38.10	2.11	0.07	2.87	0.11	3.91	0.15	5.56	0.21	7.82	0.30	
1"	33.40	38.10	2.77	0.14	3.38	0.16	4.55	0.22	6.35	0.30	9.09	0.43	
1 1/4"	42.16	47.60	2.77	0.19	3.56	0.25	4.85	0.34	6.35	0.45	9.70	0.68	
1 1/2"	48.26	57.20	2.77	0.27	3.68	0.37	5.08	0.51	7.14	0.72	10.15	1.02	
2"	60.33	76.20	2.77	0.47	3.91	0.66	5.54	0.94	8.74	1.48	11.07	1.87	
2 1/2"	73.03	95.30	3.05	0.78	5.16	1.32	7.01	1.79	9.53	2.44	14.02	3.59	
3"	88.90	114.30	3.05	1.13	5.49	2.02	7.62	2.80	11.13	4.10	15.24	5.61	
3 1/2"	101.60	133.40	3.05	1.54	5.74	2.96	8.08	4.17	-	-	-	-	
4"	114.30	152.40	3.05	1.94	6.02	3.88	8.56	5.52	13.49	8.69	17.12	11.03	
5"	141.30	190.50	3.40	3.36	6.55	6.62	9.53	9.63	15.88	16.05	19.05	19.25	
6"	168.28	228.60	3.40	4.81	7.11	10.60	10.97	16.35	18.24	27.19	21.95	32.72	
8"	219.08	304.80	3.76	9.27	8.18	20.30	12.70	31.52	23.01	57.10	22.23	55.17	
10"	273.05	381.00	4.19	16.70	9.27	36.00	12.70	49.32	28.58	110.99	25.40	98.64	
12"	323.85	457.00	4.57	28.00	9.53	54.00	12.70	71.96	33.32	188.80	25.40	143.92	
14"	355.60	533.40	4.78	37.00	9.53	73.00	12.70	97.28	35.71	273.54	-	-	
16"	406.40	609.60	4.78	48.00	9.53	95.00	12.70	126.60	40.46	403.33	-	-	
18"	457.20	685.80	4.78	61.00	9.53	121.00	12.70	161.25	45.24	574.40	-	-	
20"	508.00	762.00	5.54	90.50	9.53	150.00	12.70	199.90	50.01	787.15	-	-	
22"	558.80	838.20	5.56	110.00	9.53	181.00	12.70	241.21	53.98	1025.22	-	-	
24"	609.60	914.00	6.35	152.00	9.53	216.00	12.70	287.85	59.54	1349.49	-	-	
26"	660.40	990.60	7.92	204.00	9.53	253.00	12.70	337.16	-	-	-	-	
28"	711.20	1066.80	7.92	235.00	9.53	295.00	12.70	393.13	-	-	-	-	
30"	762.00	1143.00	7.92	270.00	9.53	339.00	12.70	451.76	-	-	-	-	
32"	812.80	1219.20	-	310.00	9.53	385.00	12.70	513.06	-	-	-	-	
34"	863.60	1295.40	-	345.00	9.53	436.00	12.70	581.03	-	-	-	-	
36"	914.40	1371.60	-	388.00	9.53	485.00	12.70	646.33	-	-	-	-	
38"	965.20	1447.80	-	436.00	9.53	545.00	12.70	726.29	-	-	-	-	
40"	1016.00	1524.00	-	-	9.53	-	12.70	-	-	-	-	-	

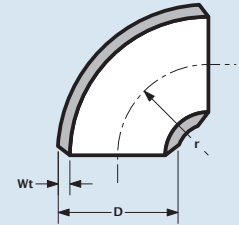
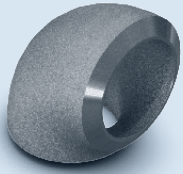
▪ Radius of elbow 3/8" is at manufacturer's option

Bocht 90° SR
Elbow 90° SR
Coude 90° SR
Bogen 90° SR



1" - 24" = ASME B16.9

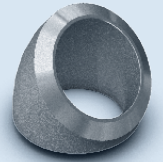
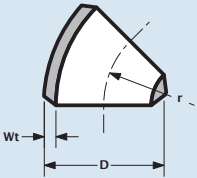
ASTM/ASME A/SA403



Elbow													
Nominal pipe size NPS	Outside diameter D	Radius r	sch10s		sch40s/STD		sch80s/XS		sch160		schXXS		
			Wt	kg/pc	Wt	kg/pc	Wt	kg/pc	Wt	kg/pc	Wt	kg/pc	
1"	33.40	25.40	2.77	0.11	3.38	0.13	4.55	0.18	6.35	0.25	9.09	0.29	
1 1/4"	42.16	31.80	2.77	0.15	3.56	0.20	4.85	0.27	6.38	0.36	7.88	0.53	
1 1/2"	48.26	38.10	2.77	0.22	3.68	0.30	5.08	0.41	7.14	0.58	10.16	0.75	
2"	60.33	50.80	2.77	0.38	3.91	0.53	5.54	0.75	8.74	1.18	11.07	1.42	
2 1/2"	73.03	63.50	3.05	0.62	5.16	1.06	7.01	1.43	9.53	1.94	14.02	2.69	
3"	88.90	76.20	3.05	0.90	5.49	1.62	7.62	2.24	11.13	3.27	15.24	4.37	
3 1/2"	101.60	88.90	3.05	1.23	5.74	2.37	8.08	3.34	-	-	-	-	
4"	114.30	101.60	3.05	1.55	6.02	3.10	8.56	4.42	13.49	6.97	17.12	8.92	
5"	141.30	127.00	3.40	2.69	6.55	5.30	9.53	7.70	15.88	12.83	19.05	15.12	
6"	168.28	152.40	3.40	3.85	7.11	8.48	10.97	13.08	18.24	21.75	21.95	25.01	
8"	219.08	203.20	3.76	7.42	8.18	16.24	12.70	25.22	23.01	45.69	22.23	46.96	
10"	273.05	254.00	4.19	13.36	9.27	28.80	12.70	39.46	28.58	88.80	25.40	84.42	
12"	323.85	304.80	4.57	22.40	9.53	43.20	12.70	57.57	33.32	151.04	25.40	122.08	
14"	355.60	355.60	4.78	29.60	9.53	58.40	12.70	77.82	35.71	218.82	-	-	
16"	406.40	406.40	4.78	38.40	9.53	76.00	12.70	101.28	40.46	322.66	-	-	
18"	457.20	457.20	4.78	48.80	9.53	96.80	12.70	129.00	45.24	459.52	-	-	
20"	508.00	508.00	5.54	72.40	9.53	120.00	12.70	159.92	49.99	629.48	-	-	
22"	558.80	558.80	5.54	88.00	9.53	144.80	12.70	192.97	53.97	820.05	-	-	
24"	609.60	609.60	6.35	121.60	9.53	172.80	12.70	230.28	59.51	1079.05	-	-	



ASTM/ASME A/SA403

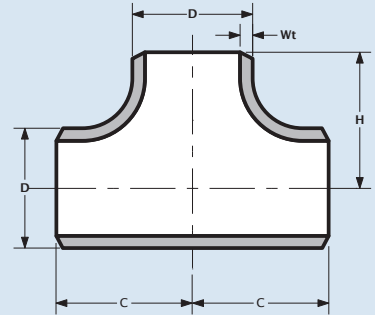
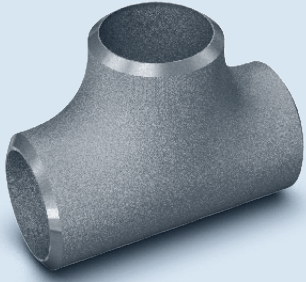


Elbow													
Nominal pipe size	Outside diameter	Radius	sch10s		sch40s/STD		sch80s/XS		sch160		schXXS		
			NPS	D	r	Wt	kg/pc	Wt	kg/pc	Wt	kg/pc	Wt	kg/pc
3/8"	17.15	note	1.65	-	2.31	-	3.20	-	-	-	-	-	-
1/2"	21.34	38.10	2.11	0.04	2.77	0.06	3.73	0.08	4.78	0.10	7.47	0.15	-
3/4"	26.70	38.10	2.11	0.05	2.87	0.08	3.91	0.11	5.56	0.15	7.82	0.21	-
1"	33.40	38.10	2.77	0.10	3.38	0.11	4.55	0.15	6.35	0.21	9.09	0.30	-
1 1/4"	42.16	47.60	2.77	0.13	3.56	0.18	4.85	0.24	6.35	0.32	9.70	0.48	-
1 1/2"	48.26	57.20	2.77	0.19	3.68	0.26	5.08	0.36	7.14	0.50	10.16	0.71	-
2"	60.33	76.20	2.77	0.33	3.91	0.46	5.54	0.66	8.74	1.04	11.07	1.31	-
2 1/2"	73.03	95.30	3.05	0.55	5.16	0.92	7.01	1.25	9.52	1.71	14.02	2.51	-
3"	88.90	114.30	3.05	0.79	5.49	1.41	7.62	1.96	11.13	2.87	15.24	3.93	-
3 1/2"	101.60	133.40	3.05	1.08	5.74	2.07	8.08	2.92	-	-	-	-	-
4"	114.30	152.40	3.05	1.36	6.02	2.72	8.56	3.86	13.49	6.08	17.12	7.72	-
5"	141.30	190.50	3.40	2.35	6.55	4.63	9.53	6.74	15.88	11.24	19.05	13.48	-
6"	168.28	228.60	3.40	3.37	7.11	7.42	10.97	11.45	18.26	19.03	21.95	22.90	-
8"	219.08	304.80	3.76	6.49	8.18	14.21	12.70	22.06	23.01	39.97	22.23	38.62	-
10"	273.05	381.00	4.19	11.69	9.27	25.20	12.70	34.52	28.58	77.69	25.40	69.05	-
12"	323.85	457.20	4.57	19.60	9.53	37.80	12.70	50.37	33.32	132.16	25.40	100.74	-
14"	355.60	533.40	4.78	25.90	9.53	51.10	12.70	68.10	35.71	191.48	-	-	-
16"	406.40	609.60	4.78	33.60	9.53	66.50	12.70	88.62	40.49	282.33	-	-	-
18"	457.20	685.80	4.78	42.70	9.53	84.70	12.70	112.88	45.24	402.08	-	-	-
20"	508.00	762.00	5.54	63.35	9.53	105.00	12.70	139.93	50.01	551.01	-	-	-
22"	558.80	838.20	5.54	77.00	9.53	126.70	12.70	168.85	53.98	717.65	-	-	-
24"	609.60	914.00	6.35	106.40	9.53	151.20	12.70	201.50	59.54	944.64	-	-	-
26"	660.40	990.60	7.92	142.80	9.53	177.10	12.70	236.01	-	-	-	-	-
28"	711.20	1066.80	7.92	164.50	9.53	206.50	12.70	275.19	-	-	-	-	-
30"	762.00	1143.00	7.92	189.00	9.53	237.30	12.70	316.23	-	-	-	-	-
32"	812.80	1219.20	7.92	217.00	9.53	269.50	12.70	359.14	-	-	-	-	-
34"	863.60	1295.40	7.92	-	9.53	305.20	12.70	406.72	-	-	-	-	-
36"	914.40	1371.60	7.92	-	9.53	339.50	12.70	452.43	-	-	-	-	-
38"	965.20	1447.80	7.92	-	9.53	381.50	12.70	508.40	-	-	-	-	-
40"	1016.00	1524.00	7.92	-	9.53	-	12.70	-	-	-	-	-	-

▪ Radius of elbow 3/8" is at manufacturer's option



ASTM/ASME A/SA403



Tee														
Nominal Pipe Size	Outside Diameter	Centre to end	Height	sch10s		sch40s/STD		sch80s/XS		sch160		schXXS		
NPS	D	C	H	Wt	kg/pc	Wt	kg/pc	Wt	kg/pc	Wt	kg/pc	Wt	kg/pc	
1/2"	21.34	25	25	2.11	0.10	2.77	0.14	3.73	0.17	4.78	0.22	7.47	0.35	
3/4"	26.67	29	29	2.11	0.15	2.87	0.20	3.91	0.26	5.56	0.36	7.82	0.51	
1"	33.40	38	38	2.77	0.29	3.38	0.33	4.55	0.48	6.35	0.66	9.09	0.95	
1 1/4"	42.16	48	48	2.77	0.45	3.56	0.55	4.85	0.78	6.35	1.02	9.70	1.56	
1 1/2"	48.26	57	57	2.77	0.60	3.68	0.77	5.08	1.16	7.14	1.63	10.15	2.32	
2"	60.33	64	64	2.77	0.80	3.91	1.10	5.54	1.67	8.74	2.63	11.07	3.33	
2 1/2"	73.03	76	76	3.05	1.16	5.16	1.93	7.01	2.89	9.53	3.93	14.02	5.78	
3"	88.90	86	86	3.05	1.60	5.49	2.80	7.62	4.25	11.13	6.21	15.24	8.51	
3 1/2"	101.60	95	95	3.05	2.10	5.74	3.80	8.08	5.78	-	-	16.15	11.56	
4"	114.30	105	105	3.05	2.55	6.02	4.71	8.56	7.31	13.49	11.53	17.12	14.63	
5"	141.30	124	124	3.40	4.00	6.55	7.60	9.53	11.50	15.88	19.16	19.05	22.98	
6"	168.28	143	143	3.40	5.50	7.11	11.00	10.97	18.25	18.24	30.34	21.95	36.51	
8"	219.08	178	178	3.76	9.50	8.18	19.50	12.70	32.76	23.01	59.36	22.23	57.34	
10"	273.05	216	216	4.19	17.50	9.27	35.00	12.70	46.92	28.58	105.60	25.40	93.85	
12"	323.85	254	254	4.57	25.00	9.53	48.00	12.70	65.13	33.32	170.87	25.40	130.25	
14"	355.60	279	279	4.78	32.00	9.53	56.00	12.70	76.76	35.71	215.82	-	-	
16"	406.40	305	305	4.78	40.00	9.53	79.00	12.70	96.14	40.46	306.28	-	-	
18"	457.20	343	343	4.78	50.00	9.53	100.00	12.70	118.88	45.24	423.47	-	-	
20"	508.00	381	381	5.54	73.00	9.53	121.00	12.70	151.18	50.01	595.33	-	-	
22"	558.80	419	419	5.54	88.00	9.53	146.00	12.70	194.56	53.98	826.96	-	-	
24"	609.60	432	432	6.35	100.00	9.53	166.00	12.70	221.22	59.54	1037.12	-	-	
26"	660.40	495	495	-	-	9.53	192.00	12.70	255.87	-	-	-	-	
28"	711.20	521	521	-	-	9.53	222.00	12.70	295.84	-	-	-	-	
30"	762.00	559	559	-	-	9.53	256.00	12.70	341.15	-	-	-	-	
32"	812.80	597	597	-	-	9.53	288.00	12.70	383.80	-	-	-	-	
34"	863.60	635	635	-	-	9.53	325.00	12.70	433.11	-	-	-	-	
36"	914.40	673	673	-	-	9.53	365.00	12.70	486.41	-	-	-	-	
38"	965.20	711	711	-	-	9.53	405.00	12.70	539.72	-	-	-	-	
40"	1016.00	749	749	-	-	9.53	447.00	12.70	595.69	-	-	-	-	



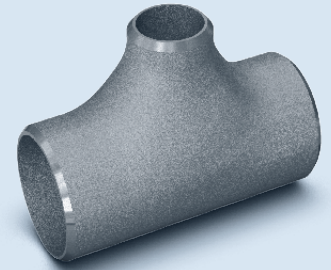
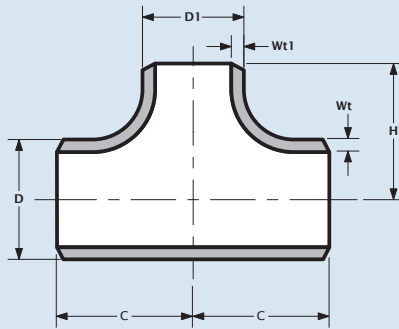
Verloop T-stuk

Reducing tee

Té réduit

Reduzier T-stück

ASTM/ASME A/SA403



Tee		Outside diameter		Centre to end	Height	sch10s			sch40s/STD			sch80s/XS			sch160			schXXS		
NPS	NPS	D	DI	C	H	Wt	Wt1	kg/pc	Wt	Wt1	kg/pc	Wt	Wt1	kg/pc	Wt	Wt1	kg/pc	Wt	Wt1	kg/pc
3/4"	1/2"	26.70	21.34	29	29	2.11	2.11	0.15	2.87	2.77	0.20	3.91	3.73	0.27	5.54	4.75	0.38	7.82	7.47	0.38
1"	1/2"	33.40	21.34	38	38	2.77	2.11	0.29	3.38	2.77	0.35	4.55	3.73	0.47	6.35	4.75	0.66	9.09	7.47	0.65
1"	3/4"	33.40	26.97	38	38	2.77	2.11	0.29	3.38	2.87	0.35	4.55	3.91	0.47	6.35	5.54	0.66	9.09	7.82	0.65
1 1/4"	1/2"	42.16	21.34	48	48	2.77	2.11	0.45	3.56	2.77	0.58	4.85	3.73	0.79	6.35	4.75	1.03	9.70	7.47	1.18
1 1/4"	3/4"	42.16	26.67	48	48	2.77	2.11	0.45	3.56	2.87	0.58	4.85	3.91	0.79	6.35	5.54	1.03	9.70	7.82	1.18
1 1/4"	1"	42.16	33.40	48	48	2.77	2.77	0.45	3.56	3.38	0.58	4.85	4.55	0.79	6.35	6.35	1.03	9.70	9.09	1.18
1 1/2"	1/2"	48.26	21.34	57	57	2.77	2.11	0.60	3.68	2.77	0.80	5.08	3.73	1.10	7.14	4.75	1.55	10.16	7.47	2.54
1 1/2"	3/4"	48.26	26.67	57	57	2.77	2.11	0.60	3.68	2.87	0.80	5.08	3.91	1.10	7.14	5.54	1.55	10.16	7.82	2.54
1 1/2"	1"	48.26	33.40	57	57	2.77	2.77	0.60	3.68	3.38	0.80	5.08	4.55	1.10	7.14	6.35	1.55	10.16	9.09	2.54
1 1/2"	1 1/4"	48.26	42.16	57	57	2.77	2.77	0.60	3.68	3.56	0.80	5.08	4.85	1.10	7.14	6.35	1.55	10.16	9.70	2.54
2"	3/4"	60.33	26.67	64	44	2.77	2.11	0.80	3.91	2.87	1.13	5.54	3.91	1.60	8.71	5.54	2.52	11.07	7.82	4.00
2"	1"	60.33	33.40	64	51	2.77	2.77	0.80	3.91	3.38	1.13	5.54	4.55	1.60	8.71	6.35	2.52	11.07	9.09	4.00
2"	1 1/4"	60.33	42.16	64	57	2.77	2.77	0.80	3.91	3.56	1.13	5.54	4.85	1.60	8.71	6.35	2.52	11.07	9.70	4.00
2"	1 1/2"	60.33	48.26	64	60	2.77	2.77	0.80	3.91	3.68	1.13	5.54	5.08	1.60	8.71	7.14	2.52	11.07	10.16	4.00
2 1/2"	1"	73.03	33.40	76	57	3.05	2.77	1.16	5.16	3.38	1.96	7.01	4.55	2.66	9.53	6.35	3.62	14.02	9.09	4.00
2 1/2"	1 1/4"	73.03	42.16	76	64	3.05	2.77	1.16	5.16	3.56	1.96	7.01	4.85	2.66	9.53	6.35	3.62	14.02	9.70	4.15
2 1/2"	1 1/2"	73.03	48.26	76	67	3.05	2.77	1.16	5.16	3.68	1.96	7.01	5.08	2.66	9.53	7.14	3.62	14.02	10.16	4.15
2 1/2"	2"	73.03	60.30	76	70	3.05	2.77	1.16	5.16	3.91	1.96	7.01	5.54	2.66	9.53	8.71	3.62	14.02	11.07	4.15
3"	1"	88.90	33.40	86	67	3.05	2.77	1.60	5.49	3.38	2.88	7.62	4.55	4.00	11.13	6.35	5.84	15.24	9.09	6.25
3"	1 1/4"	88.90	42.26	86	70	3.05	2.77	1.60	5.49	3.56	2.88	7.62	4.85	4.00	11.13	6.35	5.84	15.24	9.70	6.25
3"	1 1/2"	88.90	48.26	86	73	3.05	2.77	1.60	5.49	3.68	2.88	7.62	5.08	4.00	11.13	7.14	5.84	15.24	10.16	6.30
3"	2"	88.90	60.30	86	76	3.05	2.77	1.60	5.49	3.91	2.88	7.62	5.54	4.00	11.13	8.71	5.84	15.24	11.07	6.35
3"	2 1/2"	88.90	73.03	86	83	3.05	3.05	1.60	5.49	5.16	2.88	7.62	7.01	4.00	11.13	9.53	5.84	15.24	14.02	6.60
3 1/2"	2"	101.60	60.30	95	83	3.05	2.77	2.20	5.74	3.91	4.14	8.08	5.54	5.83	-	-	-	16.15	11.07	6.40
3 1/2"	2 1/2"	101.60	73.03	95	89	3.05	3.05	2.20	5.74	5.16	4.14	8.08	7.01	5.83	-	-	-	16.15	14.02	6.90
3 1/2"	3"	101.60	88.90	95	92	3.05	3.05	2.20	5.74	5.49	4.14	8.08	7.62	5.83	-	-	-	16.15	15.24	8.34
4"	1 1/2"	114.30	48.26	105	86	3.05	2.77	2.55	6.02	3.68	5.03	8.56	5.08	7.15	13.49	7.14	11.27	17.12	10.16	14.50
4"	2"	114.30	60.30	105	89	3.05	2.77	2.55	6.02	3.91	5.03	8.56	5.54	7.15	13.49	8.71	11.27	17.12	11.07	14.50
4"	2 1/2"	114.30	73.03	105	95	3.05	3.05	2.55	6.02	5.16	5.03	8.56	7.01	7.15	13.49	9.53	11.27	17.12	14.02	14.50
4"	3"	114.30	88.90	105	98	3.05	3.05	2.55	6.02	5.49	5.03	8.56	7.62	7.15	13.49	11.13	11.27	17.12	15.24	14.50
4"	3 1/2"	114.30	101.60	105	102	3.05	3.05	2.55	6.02	5.74	5.03	8.56	8.08	7.15	-	-	-	17.12	16.15	14.50
5"	3"	141.30	88.90	124	111	3.40	3.05	4.00	6.55	5.49	7.71	9.53	7.62	11.22	15.88	11.13	18.70	19.05	15.24	27.71
5"	3 1/2"	141.30	101.60	124	114	3.40	3.05	4.00	6.55	5.74	7.71	9.53	8.08	11.22	-	-	-	19.05	16.15	27.71
5"	4"	141.30	114.30	124	117	3.40	3.05	4.00	6.55	6.02	7.71	9.53	8.56	11.22	15.88	13.49	18.70	19.05	17.12	27.71
6"	3"	168.28	88.9	143	124	3.40	3.05	5.50	7.11	5.49	11.50	10.97	7.62	17.74	18.24	11.13	29.50	21.95	15.24	37.25
6"	3 1/2"	168.28	101.60	143	127	3.40	3.05	5.50	7.11	5.74	11.50	10.97	8.08	17.74	-	-	-	21.95	16.15	37.25
6"	4"	168.28	114.30	143	130	3.40	3.05	5.50	7.11	6.02	11.50	10.97	8.56	17.74	18.24	13.49	29.50	21.95	17.12	37.25
6"	5"	168.28	141.30	143	137	3.40	3.40	5.50	7.11	6.55	11.50	10.97	9.53	17.74	18.24	15.88	29.50	21.95	19.05	47.48
8"	4"	219.08	114.30	178	156	3.76	3.05	9.50	8.18	6.02	20.67	12.70	8.56	32.09	23.01	13.49	58.14	22.23	17.12	55.20
8"	5"	219.08	141.30	178	162	3.76	3.40	9.50	8.18	6.55	20.67	12.70	9.53	32.09	23.01	15.88	58.14	22.23	19.05	56.50
8"	6"	219.08	168.28	178	168	3.76	3.40	9.50	8.18	7.11	20.67	12.70	10.7	32.09	23.01	18.24	58.14	22.23	21.95	57.80
10"	5"	273.05	141.30	216	191	4.19	3.40	17.50	9.27	6.55	38.72	12.70	9.53	53.05	28.58	15.88	119.38	25.40	19.05	79.30
10"	6"	273.05	168.28	216	194	4.19	3.40	17.50	9.27	7.11	38.72	12.70	10.97	53.05	28.58	18.24	119.38	25.40	21.95	90.93
10"	8"	273.05	219.10	216	203	4.19	3.76	17.50	9.27	8.18	38.72	12.70	12.70	53.05	28.58	23.01	119.38	25.40	22.23	98.50
12"	6"	323.85	168.28	254	219	4.57	3.40	25.00	9.53	7.11	52.13	12.70	10.97	69.47	33.32	18.24	182.26	25.40	21.95	125.40

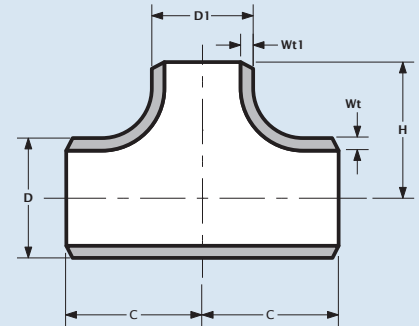
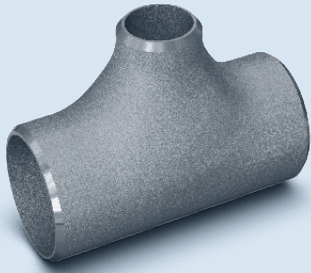
continued on next page

Verloop T-stuk
Reducing tee
Té réduit
Reduzier T-stück



3/4" - 40" = ASME B16.9

ASTM/ASME A/SA403



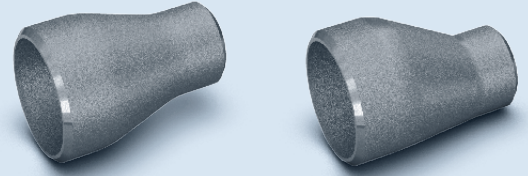
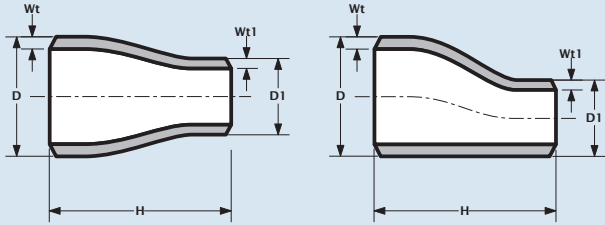
Tee (continued from previous page)

Nominal Pipe Size	Outside Diameter	Centre to end	Height	sch10s			sch40s			sch80s			sch160s			schXXS				
				NPS	D	D1	Wt	Wt1	kg/pc	Wt	Wt1	kg/pc	Wt	Wt1	kg/pc	Wt	Wt1	kg/pc	Wt	Wt1
12"	8"	323.85	219.08	254	229	4.57	3.76	25.00	9.53	8.18	52.13	12.70	12.70	69.47	33.32	23.01	182.26	25.40	22.23	128.40
12"	10"	323.85	273.05	254	241	4.57	4.19	25.00	9.53	9.27	52.13	12.70	12.70	69.47	33.32	28.58	182.26	25.40	25.40	130.40
14"	8"	355.60	219.08	279	248	4.78	3.76	32.00	9.53	8.18	63.80	12.70	12.70	85.02	35.71	23.01	239.06	-	-	-
14"	10"	355.60	273.05	279	257	4.78	4.19	32.00	9.53	9.27	63.80	12.70	12.70	85.02	35.71	28.58	239.06	-	-	-
14"	12"	355.60	323.85	279	270	4.78	4.57	32.00	9.53	9.53	63.80	12.70	12.70	85.02	35.71	33.32	239.06	-	-	-
16"	10"	406.40	273.05	305	283	4.78	4.19	40.00	9.53	9.27	79.75	12.70	12.70	106.28	40.46	28.58	338.59	-	-	-
16"	12"	406.40	323.85	305	295	4.78	4.57	40.00	9.53	9.53	79.75	12.70	12.70	106.28	40.46	33.32	338.59	-	-	-
16"	14"	406.40	355.60	305	305	4.78	4.78	40.00	9.53	9.53	79.75	12.70	12.70	106.28	40.46	35.71	338.59	-	-	-
18"	12"	457.20	323.85	343	321	4.78	4.57	50.00	9.53	9.53	99.69	12.70	12.70	132.85	45.24	33.32	473.24	-	-	-
18"	14"	457.20	355.60	343	330	4.78	4.78	50.00	9.53	9.53	99.69	12.70	12.70	132.85	45.24	35.71	473.24	-	-	-
18"	16"	457.20	406.40	343	330	4.78	4.78	50.00	9.53	9.53	99.69	12.70	12.70	132.85	45.24	40.46	473.24	-	-	-
20"	14"	508.00	355.60	381	356	5.54	4.78	73.00	9.53	9.53	125.58	12.70	12.70	167.35	49.99	35.71	658.73	-	-	-
20"	16"	508.00	406.40	381	356	5.54	4.78	73.00	9.53	9.53	125.58	12.70	12.70	167.35	49.99	40.46	658.73	-	-	-
20"	18"	508.00	457.20	381	368	5.54	4.78	73.00	9.53	9.53	125.58	12.70	12.70	167.35	49.99	45.24	658.73	-	-	-
22"	16"	558.80	406.40	419	381	5.54	4.78	88.00	9.53	9.53	151.38	12.70	12.70	201.73	53.97	40.46	857.27	-	-	-
22"	18"	558.80	457.20	419	394	5.54	4.78	88.00	9.53	9.53	151.38	12.70	12.70	201.73	53.97	45.24	857.27	-	-	-
22"	20"	558.80	508.00	419	406	5.54	5.54	88.00	9.53	9.53	151.38	12.70	12.70	201.73	53.97	49.99	857.27	-	-	-
24"	18"	609.60	457.20	432	419	6.35	4.78	100.00	9.53	9.53	150.08	12.70	12.70	200.00	59.51	45.24	937.17	-	-	-
24"	20"	609.60	508.00	432	432	6.35	5.54	100.00	9.53	9.53	150.08	12.70	12.70	200.00	59.51	49.99	937.17	-	-	-
24"	22"	609.60	558.80	432	432	6.35	5.54	100.00	9.53	9.53	150.08	12.70	12.70	200.00	59.51	53.97	937.17	-	-	-
26"	20"	660.40	508.00	495	457	7.92	5.54	154.00	9.53	5.54	185.31	12.70	12.70	246.95	-	-	-	-	-	-
26"	22"	660.40	558.80	495	470	7.92	5.54	154.00	9.53	9.53	185.31	12.70	12.70	246.95	-	-	-	-	-	-
26"	24"	660.40	609.60	495	483	7.92	6.35	154.00	9.53	9.53	185.31	12.70	12.70	246.95	-	-	-	-	-	-
28"	22"	711.20	558.80	521	495	7.92	5.54	178.00	9.53	9.53	214.18	12.70	12.70	285.42	-	-	-	-	-	-
28"	24"	711.20	609.60	521	508	7.92	6.35	178.00	9.53	9.53	214.18	12.70	12.70	285.42	-	-	-	-	-	-
28"	26"	711.20	660.40	521	521	7.92	7.92	178.00	9.53	9.53	214.18	12.70	12.70	285.42	-	-	-	-	-	-
30"	24"	762.80	609.60	559	533	7.92	6.35	205.00	9.53	9.53	246.67	12.70	12.70	328.72	-	-	-	-	-	-
30"	26"	762.80	660.40	559	546	7.92	7.92	205.00	9.53	9.53	246.67	12.70	12.70	328.72	-	-	-	-	-	-
30"	28"	762.80	711.20	559	546	7.92	7.92	205.00	9.53	9.53	246.67	12.70	12.70	328.72	-	-	-	-	-	-
32"	26"	812.80	660.40	597	572	7.92	7.92	231.00	9.53	9.53	277.96	12.70	12.70	370.42	-	-	-	-	-	-
32"	28"	812.80	711.20	597	572	7.92	7.92	231.00	9.53	9.53	277.96	12.70	12.70	370.42	-	-	-	-	-	-
32"	30"	812.80	762.80	597	584	7.92	7.92	231.00	9.53	9.53	277.96	12.70	12.70	370.42	-	-	-	-	-	-
34"	28"	863.60	711.20	635	597	7.92	7.92	260.00	9.53	9.53	312.85	12.70	12.70	416.91	-	-	-	-	-	-
34"	30"	863.60	762.80	635	610	7.92	7.92	260.00	9.53	9.53	312.85	12.70	12.70	416.91	-	-	-	-	-	-
34"	32"	863.60	812.80	635	622	7.92	7.92	260.00	9.53	9.53	312.85	12.70	12.70	416.91	-	-	-	-	-	-
36"	30"	914.40	762.80	673	635	7.92	7.92	260.00	9.53	9.53	312.85	12.70	12.70	416.91	-	-	-	-	-	-
36"	32"	914.40	812.80	673	648	7.92	7.92	292.00	9.53	9.53	351.36	12.70	12.70	468.23	-	-	-	-	-	-
36"	34"	914.40	863.60	673	660	7.92	7.92	292.00	9.53	9.53	351.36	12.70	12.70	468.23	-	-	-	-	-	-
38"	32"	965.20	812.80	711	686	7.92	7.92	-	9.53	9.53	-	12.70	12.70	-	-	-	-	-	-	-
38"	34"	965.20	863.60	711	698	7.92	7.92	-	9.53	9.53	-	12.70	12.70	-	-	-	-	-	-	-
38"	36"	965.20	914.40	711	711	7.92	7.92	-	9.53	9.53	-	12.70	12.70	-	-	-	-	-	-	-
40"	34"	1016.00	863.60	749	724	7.92	7.92	-	9.53	9.53	-	12.70	12.70	-	-	-	-	-	-	-
40"	36"	1016.00	914.40	749	737	7.92	7.92	-	9.53	9.53	-	12.70	12.70	-	-	-	-	-	-	-
40"	38"	1016.00	965.20	749	749	7.92	7.92	-	9.53	9.53	-	12.70	12.70	-	-	-	-	-	-	-



Concentrisch en excentrisch verloopstuk Concentric and eccentric reducer Réduction concentrique et excentrique Konzentrische und exzentrische Reduzierung

ASTM/ASME A/SA403



Concentric and eccentric reducer																				
Nominal pipe size		Outside diameter		Height	sch10s			sch40s/STD			sch80s/XS			sch160			schXXS			
NPS	NPS	D	D1		H	Wt	Wt1	kg/pc	Wt	Wt1	kg/pc	Wt	Wt1	kg/pc	Wt	Wt1	kg/pc	Wt	Wt1	kg/pc
3/4"	1/2"	26.67	21.34	38	2.11	2.11	0.05	2.87	2.77	0.07	3.91	3.73	0.10	5.54	4.75	0.14	7.82	7.47	0.20	
1"	1/2"	33.40	21.34	51	2.77	2.11	0.10	3.38	2.77	0.12	4.55	3.73	0.16	6.35	4.75	0.22	9.09	7.47	0.31	
1"	3/4"	33.40	26.67	51	2.77	2.11	0.10	3.38	2.87	0.12	4.55	3.91	0.16	6.35	5.54	0.22	9.09	7.82	0.31	
1 1/4"	1/2"	42.16	21.34	51	2.77	2.11	0.14	3.56	2.77	0.18	4.85	3.73	0.25	6.35	4.75	0.33	9.70	7.47	0.50	
1 1/4"	3/4"	42.16	26.67	51	2.77	2.11	0.14	3.56	2.87	0.18	4.85	3.91	0.25	6.35	5.54	0.33	9.70	7.82	0.50	
1 1/4"	1"	42.16	33.40	51	2.77	2.77	0.14	3.56	3.38	0.18	4.85	4.55	0.25	6.35	6.35	0.33	9.70	9.09	0.50	
1 1/2"	1/2"	48.26	21.34	64	2.77	2.11	0.21	3.68	2.77	0.28	5.08	3.73	0.39	7.14	4.75	0.55	10.16	7.47	0.78	
1 1/2"	3/4"	48.26	26.67	64	2.77	2.11	0.21	3.68	2.87	0.28	5.08	3.91	0.39	7.14	5.54	0.55	10.16	7.82	0.78	
1 1/2"	1"	48.26	33.40	64	2.77	2.77	0.21	3.68	3.38	0.28	5.08	4.55	0.39	7.14	6.35	0.55	10.16	9.09	0.78	
1 1/2"	1 1/4"	48.26	42.16	64	2.77	2.77	0.21	3.68	3.56	0.28	5.08	4.85	0.39	7.14	6.35	0.55	10.16	9.70	0.78	
2"	3/4"	60.33	26.67	76	2.77	2.11	0.30	3.91	2.77	0.42	5.54	3.91	0.60	8.71	5.54	0.94	11.07	7.82	1.19	
2"	1"	60.33	33.40	76	2.77	2.77	0.30	3.91	3.38	0.42	5.54	4.55	0.60	8.71	6.35	0.94	11.07	9.09	1.19	
2"	1 1/4"	60.33	42.16	76	2.77	2.77	0.30	3.91	3.56	0.42	5.54	4.85	0.60	8.71	6.35	0.94	11.07	9.70	1.19	
2"	1 1/2"	60.33	48.26	76	2.77	2.77	0.30	3.91	3.68	0.42	5.54	5.08	0.60	8.71	7.14	0.94	11.07	10.16	1.19	
2 1/2"	1"	60.33	33.40	89	3.05	2.77	0.44	5.16	3.38	0.74	7.01	4.55	1.01	9.53	6.35	1.37	14.02	9.09	2.02	
2 1/2"	1 1/4"	73.03	42.16	89	3.05	2.77	0.44	5.16	3.56	0.74	7.01	4.85	1.01	9.53	6.35	1.37	14.02	9.70	2.02	
2 1/2"	1 1/2"	73.03	48.26	89	3.05	2.77	0.44	5.16	3.68	0.74	7.01	5.08	1.01	9.53	7.14	1.37	14.02	10.16	2.02	
2 1/2"	2"	73.03	60.33	89	3.05	2.77	0.44	5.16	3.91	0.74	7.01	5.54	1.01	9.53	8.71	1.37	14.02	11.07	2.02	
3"	1"	88.90	33.40	89	3.05	2.77	0.56	5.49	3.38	1.01	7.62	4.85	1.40	11.13	6.35	2.04	15.24	9.09	2.79	
3"	1 1/2"	88.90	48.26	89	3.05	2.77	0.56	5.49	3.68	1.01	7.62	5.08	1.40	11.13	7.14	2.04	15.24	10.16	2.79	
3"	2"	88.90	60.33	89	3.05	2.77	0.56	5.49	3.91	1.01	7.62	5.54	1.40	11.13	8.71	2.04	15.24	11.07	2.79	
3"	2 1/2"	88.90	73.03	89	3.05	3.05	0.56	5.49	5.16	1.01	7.62	7.01	1.40	11.13	9.53	2.04	15.24	14.02	2.79	
3 1/2"	2"	101.60	60.33	102	3.05	2.77	0.89	5.74	3.91	1.67	8.08	5.54	2.35	-	-	-	-	-	-	
3 1/2"	2 1/2"	101.60	73.03	102	3.05	3.05	0.89	5.74	5.16	1.67	8.08	7.01	2.35	-	-	-	-	-	-	
3 1/2"	3"	101.60	88.90	102	3.05	3.05	0.89	5.74	5.49	1.67	8.08	7.62	2.35	-	-	-	-	-	-	
4"	1 1/2"	114.30	48.26	102	3.05	2.77	1.55	6.02	3.68	3.06	8.56	5.08	4.35	13.49	7.14	6.86	-	-	-	
4"	2"	114.30	60.33	102	3.05	2.77	1.55	6.02	3.91	3.06	8.56	5.54	4.35	13.49	8.71	6.86	-	-	-	
4"	2 1/2"	114.30	73.03	102	3.05	3.05	1.55	6.02	5.16	3.06	8.56	7.01	4.35	13.49	9.53	6.86	-	-	-	
4"	3"	114.30	88.90	102	3.05	3.05	1.55	6.02	5.49	3.06	8.56	7.62	4.35	13.49	11.13	6.86	-	-	-	
4"	3 1/2"	114.30	101.60	102	3.05	3.05	1.55	6.02	5.74	3.06	8.56	8.08	4.35	-	-	-	-	-	-	
5"	3"	141.30	88.90	127	3.40	3.05	1.55	6.55	5.49	2.99	9.53	7.62	4.35	15.88	11.13	7.25	-	-	-	
5"	3 1/2"	141.30	101.60	127	3.40	3.05	1.55	6.55	5.74	2.99	9.53	8.08	4.35	-	-	-	-	-	-	
5"	4"	141.30	114.30	127	3.40	3.05	1.55	6.55	6.02	2.99	9.53	8.56	4.35	15.88	13.49	7.25	-	-	-	
6"	3"	168.28	88.90	140	3.40	3.05	1.55	7.11	5.49	3.24	10.97	7.62	5.00	18.26	11.13	8.32	-	-	-	
6"	3 1/2"	168.28	101.60	140	3.40	3.05	1.55	7.11	5.74	3.24	10.97	8.08	5.00	-	-	-	-	-	-	
6"	4"	168.28	114.30	140	3.40	3.05	1.55	7.11	6.02	3.24	10.97	8.56	5.00	18.26	13.49	8.32	-	-	-	
6"	5"	168.28	141.30	140	3.40	3.40	1.55	7.11	6.55	3.24	10.97	9.53	5.00	18.26	15.88	8.32	-	-	-	
8"	4"	219.08	114.30	152	3.76	3.05	3.07	8.18	6.02	6.68	12.70	8.56	10.37	23.01	13.49	18.79	-	-	-	
8"	5"	219.08	141.30	152	3.76	3.40	3.07	8.18	6.55	6.68	12.70	9.53	10.37	23.01	15.88	18.79	-	-	-	
8"	6"	219.08	168.28	152	3.76	3.40	3.07	8.18	7.11	6.68	12.70	10.97	10.37	23.01	18.26	18.79	-	-	-	
10"	5"	273.05	141.30	178	4.19	3.40	5.00	9.27	6.55	11.06	12.70	9.53	15.15	28.58	15.88	34.09	-	-	-	
10"	6"	273.05	168.30	178	4.19	3.40	5.00	9.27	7.11	11.06	12.70	10.97	15.15	28.58	18.26	34.09	-	-	-	
10"	8"	273.05	219.08	178	4.19	3.76	5.00	9.27	8.18	11.06	12.70	12.70	15.15	28.58	23.01	34.09	-	-	-	
12"	6"	323.85	168.28	203	4.57	3.40	5.00	9.53	7.11	10.43	12.70	10.97	13.90	33.32	18.26	36.47	-	-	-	
12"	8"	323.85	219.08	203	4.57	3.76	7.43	9.53	8.18	15.49	12.70	12.70	20.64	33.32	23.01	54.15	-	-	-	

continued on next page

Concentrisch en excentrisch verloopstuk

Concentric and eccentric reducer

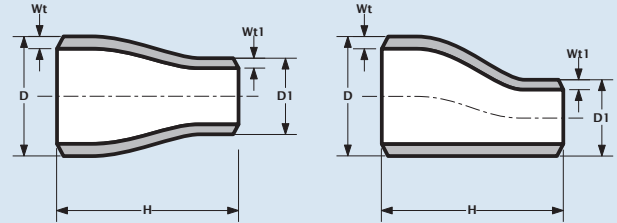
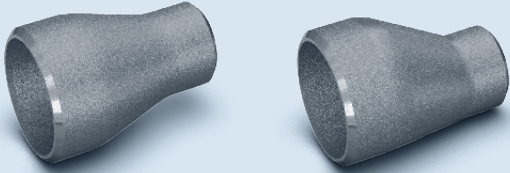
Réduction concentrique et excentrique

Konzentrische und exzentrische Reduzierung



3/4" - 24" = ASME B16.9

ASTM/ASME A/SA403

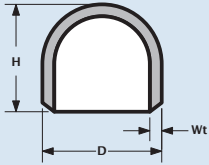


Concentric and eccentric reducer (continued from previous page)

Nominal pipe size		Outside diameter		Height	sch10s			sch40s/STD			sch80s/XS			sch160			schXXS		
NPS	NPS	D	DI		Wt	Wt1	kg/pc	Wt	Wt1	kg/pc	Wt	Wt1	kg/pc	Wt	Wt1	kg/pc	Wt	Wt1	kg/pc
12"	10"	323.85	273.05	203	4.57	4.19	7.43	9.53	9.27	15.49	12.70	12.70	20.64	33.32	28.58	54.15	-	-	-
14"	8"	355.60	219.08	330	4.78	3.76	13.84	9.53	8.18	27.59	12.70	12.70	36.77	35.71	23.01	103.39	-	-	-
14"	10"	355.60	273.05	330	4.78	4.19	13.84	9.53	9.27	27.59	12.70	12.70	36.77	35.71	28.58	103.39	-	-	-
14"	12"	355.60	323.85	330	4.78	4.57	13.84	9.53	9.53	27.59	12.70	12.70	36.77	35.71	33.32	103.39	-	-	-
16"	10"	406.40	273.05	356	4.78	4.19	16.76	9.53	9.27	33.41	12.70	12.70	44.52	40.46	28.58	141.83	-	-	-
16"	12"	406.40	323.85	356	4.78	4.57	16.76	9.53	9.53	33.41	12.70	12.70	44.52	40.46	33.32	141.83	-	-	-
16"	14"	406.40	355.60	356	4.78	4.78	16.76	9.53	9.53	33.41	12.70	12.70	44.52	40.46	35.71	141.83	-	-	-
18"	12"	457.20	323.85	381	4.78	4.57	20.36	9.53	9.53	40.59	12.70	12.70	54.09	45.24	33.32	192.68	-	-	-
18"	14"	457.20	355.60	381	4.78	4.78	20.36	9.53	9.53	40.59	12.70	12.70	54.09	45.24	35.71	192.68	-	-	-
18"	16"	457.20	406.40	381	4.78	4.78	20.36	9.53	9.53	40.59	12.70	12.70	54.09	45.24	40.46	192.68	-	-	-
20"	14"	508.00	355.60	508	5.54	4.78	36.41	9.53	9.53	62.63	12.70	12.70	83.46	49.99	35.71	328.52	-	-	-
20"	16"	508.00	406.40	508	5.54	4.78	36.41	9.53	9.53	62.63	12.70	12.70	83.46	49.99	40.46	328.52	-	-	-
20"	18"	508.00	457.20	508	5.54	4.78	36.41	9.53	9.53	62.63	12.70	12.70	83.46	49.99	45.24	328.52	-	-	-
22"	16"	558.80	406.40	508	5.54	4.78	40.26	9.53	9.53	69.26	12.70	12.70	92.30	53.97	40.46	392.24	-	-	-
22"	18"	558.80	457.20	508	5.54	4.78	40.26	9.53	9.53	69.26	12.70	12.70	92.30	53.97	45.24	392.24	-	-	-
22"	20"	558.80	508.00	508	5.54	5.54	40.26	9.53	9.53	69.26	12.70	12.70	92.30	53.97	49.99	392.24	-	-	-
24"	18"	609.60	457.20	508	6.35	4.78	51.47	9.53	9.53	77.25	12.70	12.70	102.95	59.51	45.24	482.41	-	-	-
24"	20"	609.60	508.00	508	6.35	5.54	51.47	9.53	9.53	77.25	12.70	12.70	102.95	59.51	49.99	482.41	-	-	-
24"	22"	609.60	558.80	508	6.35	5.54	51.47	9.53	9.53	77.25	12.70	12.70	102.95	59.51	53.97	482.41	-	-	-
26"	20"	660.40	508.00	610	7.93	5.54	77.00	9.53	5.54	92.54	12.70	12.70	123.32	-	-	-	-	-	-
26"	22"	660.40	558.80	610	7.93	5.54	77.00	9.53	5.54	92.54	12.70	12.70	123.32	-	-	-	-	-	-
26"	24"	660.40	609.60	610	7.93	6.35	77.00	9.53	5.54	92.54	12.70	12.70	123.32	-	-	-	-	-	-
28"	22"	711.20	558.80	610	7.93	5.54	83.00	9.53	5.54	99.75	12.70	12.70	132.93	-	-	-	-	-	-
28"	24"	711.20	609.60	610	7.93	6.35	83.00	9.53	5.54	99.75	12.70	12.70	132.93	-	-	-	-	-	-
28"	26"	711.20	660.40	610	7.93	7.93	83.00	9.53	5.54	99.75	12.70	12.70	132.93	-	-	-	-	-	-
30"	24"	762.00	609.60	610	7.93	6.35	89.00	9.53	5.54	106.96	12.70	12.70	142.54	-	-	-	-	-	-
30"	26"	762.00	660.40	610	7.93	7.93	89.00	9.53	5.54	106.96	12.70	12.70	142.54	-	-	-	-	-	-
30"	28"	762.00	711.20	610	7.93	7.93	89.00	9.53	5.54	106.96	12.70	12.70	142.54	-	-	-	-	-	-
32"	26"	812.80	762.00	610	7.93	7.93	95.00	9.53	5.54	114.17	12.70	12.70	152.15	-	-	-	-	-	-
32"	28"	812.80	711.20	610	7.93	7.93	95.00	9.53	5.54	114.17	12.70	12.70	152.15	-	-	-	-	-	-
32"	30"	812.80	762.00	610	7.93	7.93	95.00	9.53	5.54	114.17	12.70	12.70	152.15	-	-	-	-	-	-
34"	28"	863.60	711.20	610	7.93	7.93	101.00	9.53	5.54	121.38	12.70	12.70	161.76	-	-	-	-	-	-
34"	30"	863.60	762.00	610	7.93	7.93	101.00	9.53	5.54	121.38	12.70	12.70	161.76	-	-	-	-	-	-
34"	32"	863.60	812.80	610	7.93	7.93	101.00	9.53	5.54	121.38	12.70	12.70	161.76	-	-	-	-	-	-
36"	30"	914.40	762.00	610	7.93	7.93	107.00	9.53	5.54	128.59	12.70	12.70	171.36	-	-	-	-	-	-
36"	32"	914.40	812.80	610	7.93	7.93	107.00	9.53	5.54	128.59	12.70	12.70	171.36	-	-	-	-	-	-
36"	34"	914.40	863.60	610	7.93	7.93	107.00	9.53	5.54	128.59	12.70	12.70	171.36	-	-	-	-	-	-
38"	32"	965.20	812.80	610	7.93	7.93	113.00	9.53	5.54	135.80	12.70	12.70	180.97	-	-	-	-	-	-
38"	34"	965.20	863.60	610	7.93	7.93	113.00	9.53	5.54	135.80	12.70	12.70	180.97	-	-	-	-	-	-
38"	36"	965.20	914.40	610	7.93	7.93	113.00	9.53	5.54	135.80	12.70	12.70	180.97	-	-	-	-	-	-
40"	34"	1016.00	863.60	610	7.93	7.93	119.00	9.53	5.54	143.01	12.70	12.70	190.58	-	-	-	-	-	-
40"	36"	1016.00	914.40	610	7.93	7.93	119.00	9.53	5.54	143.01	12.70	12.70	190.58	-	-	-	-	-	-
40"	38"	1016.00	965.20	610	7.93	7.93	119.00	9.53	5.54	143.01	12.70	12.70	190.58	-	-	-	-	-	-



ASTM/ASME A/SA403



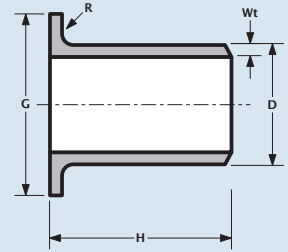
Cap													
Nominal pipe size	Outside diameter	Height	sch10s		sch40s/STD		sch80s/XS		sch160		schXXS		
			Wt	kg/pc	Wt	kg/pc	Wt	kg/pc	Wt	kg/pc	Wt	kg/pc	
1/2"	21.34	25.40	2.11	0.05	2.77	0.07	3.73	0.09	4.75	0.11	7.47	0.17	
3/4"	26.70	25.40	2.11	0.07	2.87	0.10	3.91	0.14	5.54	0.20	7.82	0.28	
1"	33.40	38.10	2.77	0.11	3.38	0.13	4.55	0.18	6.35	0.25	9.09	0.36	
1 1/4"	42.16	38.10	2.77	0.16	3.56	0.21	4.85	0.29	6.38	0.38	9.70	0.58	
1 1/2"	48.26	38.10	2.77	0.17	3.68	0.23	5.08	0.32	7.14	0.45	10.16	0.64	
2"	60.33	38.10	2.77	0.23	3.91	0.32	5.54	0.45	8.74	0.71	11.07	0.90	
2 1/2"	73.03	38.10	3.05	0.38	5.16	0.64	7.01	0.87	9.53	1.18	14.02	1.74	
3"	88.90	50.80	3.05	0.54	5.49	0.97	7.62	1.35	11.13	1.97	15.24	2.70	
3 1/2"	101.60	63.50	3.05	0.69	5.74	1.30	8.08	1.83	-	-	16.15	3.20	
4"	114.30	63.50	3.05	0.84	6.02	1.66	8.56	2.36	13.49	3.72	17.12	4.72	
5"	141.30	76.20	3.40	1.21	6.55	2.33	9.53	3.39	15.88	5.65	19.05	6.78	
6"	168.28	88.90	3.40	1.90	7.11	3.97	10.97	6.13	18.24	10.19	21.95	12.26	
8"	219.08	101.60	3.76	2.58	8.18	5.61	12.70	8.71	23.01	15.78	22.23	15.25	
10"	273.05	127.00	4.19	5.10	9.27	11.28	12.70	15.45	28.58	34.77	25.40	30.90	
12"	323.85	152.40	4.57	7.13	9.53	14.87	12.70	19.82	33.32	52.00	25.40	39.64	
14"	355.60	165.10	4.78	9.92	9.53	19.78	12.70	26.36	35.71	74.12	-	-	
16"	406.40	177.80	4.78	12.55	9.53	25.02	12.70	33.34	40.46	106.22	-	-	
18"	457.20	203.20	4.78	15.94	9.53	31.78	12.70	42.35	45.24	150.86	-	-	
20"	508.00	228.60	5.54	20.24	9.53	34.82	12.70	46.40	49.99	182.64	-	-	
22"	558.80	254.00	5.54	23.39	9.53	40.24	12.70	53.63	53.97	227.91	-	-	
24"	609.60	266.70	6.35	29.75	9.53	44.65	12.70	59.50	59.51	278.81	-	-	
26"	660.40	266.70	-	-	9.53	53.80	12.70	71.55	-	-	-	-	
28"	711.20	266.70	7.93	40.19	9.53	62.40	12.70	82.99	-	-	-	-	
30"	762.00	266.70	-	-	9.53	71.70	12.70	95.36	-	-	-	-	
32"	812.80	266.70	-	-	9.53	81.60	12.70	108.52	-	-	-	-	
34"	863.60	266.70	-	-	9.53	95.70	12.70	127.28	-	-	-	-	
36"	914.40	266.70	-	-	9.53	103.00	12.70	136.99	-	-	-	-	
38"	965.20	305.00	-	-	9.53	113.00	12.70	150.29	-	-	-	-	
40"	1016.00	305.00	-	-	9.53	127.00	12.70	168.91	-	-	-	-	

Stub end
Stub end
Stub end
Vorschweiss bunde



1/2" - 24" = ASME B16.9
MSS-SP43 TYPE A - short pattern

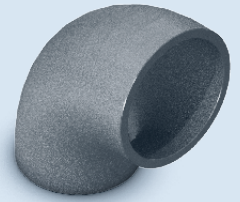
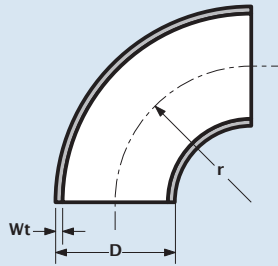
ASTM/ASME A/SA403



Stub end											
Nominal pipe size	Outside diameter	Diameter of lap	Height	Radius	sch10s		sch40s/STD		sch80s/XS		
					Wt	kg/pc	Wt	kg/pc	Wt	kg/pc	
NPS	D	G	H	R							
1/2"	21.34	34.90	50.80	3.0	2.11	0.07	2.77	0.09	3.73	0.15	
3/4"	26.70	42.90	50.80	3.0	2.11	0.10	2.87	0.12	3.91	0.17	
1"	33.40	50.80	50.80	3.0	2.77	0.16	3.38	0.17	4.55	0.19	
1 1/4"	42.16	63.50	50.80	5.0	2.77	0.22	3.56	0.25	4.85	0.27	
1 1/2"	48.26	73.00	50.80	6.0	2.77	0.25	3.68	0.31	5.08	0.36	
2"	60.33	92.10	63.50	8.0	2.77	0.43	3.91	0.61	5.54	0.76	
2 1/2"	73.03	104.80	63.50	8.0	3.05	0.57	5.16	0.80	7.01	1.03	
3"	88.90	127.00	63.50	10.0	3.05	0.73	5.49	1.13	7.62	1.43	
4"	114.30	157.20	76.20	11.0	3.05	1.09	6.02	1.87	8.56	2.56	
5"	141.30	185.70	76.20	11.0	3.40	1.47	6.55	2.28	9.53	3.26	
6"	168.28	215.90	88.90	13.0	3.40	2.15	7.11	3.57	10.97	5.10	
8"	219.08	269.90	101.60	13.0	3.76	3.60	8.18	6.07	12.70	9.88	
10"	273.05	323.90	127.00	13.0	4.19	5.35	9.27	10.07	12.70	12.58	
12"	323.85	381.00	152.40	13.0	4.57	8.16	9.53	13.80	12.70	20.21	
14"	355.60	412.80	152.40	13.0	4.78	9.12	9.53	16.38	12.70	21.78	
16"	406.40	469.90	152.40	13.0	4.78	11.02	9.53	19.12	12.70	22.85	
18"	457.20	533.40	152.40	13.0	4.78	12.90	9.53	22.42	12.70	29.37	
20"	508.00	584.20	152.40	13.0	5.54	14.51	9.53	24.85	12.70	29.73	
22"	558.80	641.40	152.40	13.0	5.54	16.85	9.53	27.93	12.70	33.42	
24"	609.60	692.20	152.40	13.0	6.35	21.01	9.53	30.39	12.70	36.38	



EN / ISO



Elbow 90°												
Nominal Pipe Size	Outside Diameter	Wall thickness	Radius 2D		Radius 1.5ID		Radius 3D		Radius 5D		Radius ID+100	
			DN	D	Wt	r	kg	r	kg	r	kg	r
-	13.5	1.6	-	-	20.0	0.02	-	-	-	-	-	-
-	17.2	1.6	-	-	25.0	0.03	-	-	-	-	-	-
-	17.2	2.0	-	-	25.0	0.04	-	-	-	-	-	-
-	18.0	1.5	-	-	23.0	0.02	-	-	-	-	-	-
-	20.0	1.5	-	-	26.0	0.03	-	-	-	-	-	-
-	20.0	2.0	-	-	26.0	0.04	-	-	-	-	-	-
15	21.3	1.5	-	-	-	-	28.0	0.03	-	-	-	-
15	21.3	1.6	-	-	-	-	28.0	0.03	45.0	0.05	-	-
15	21.3	2.0	-	-	-	-	28.0	0.04	45.0	0.07	-	-
15	21.3	2.6 (gas)	-	-	-	-	28.0	0.06	-	-	-	-
15	21.3	3.0	-	-	-	-	28.0	0.06	-	-	-	-
15	21.3	4.0	-	-	-	-	28.0	0.08	45.0	0.13	-	-
-	23.0	1.5	-	-	30.0	0.04	-	-	-	-	-	-
-	24.0	2.0	-	-	-	-	-	-	-	-	120.0	0.25
-	25.0	1.5	-	-	37.0	0.04	-	-	-	-	-	-
20	26.9	1.5	-	-	-	-	29.0	0.04	-	-	-	-
20	26.9	1.6	-	-	-	-	29.0	0.04	57.0	0.09	-	-
20	26.9	2.0	-	-	-	-	29.0	0.06	57.0	0.11	-	-
20	26.9	2.6 (gas)	-	-	-	-	29.0	0.07	-	-	-	-
20	26.9	3.0	-	-	-	-	29.0	0.08	-	-	-	-
20	26.9	3.2	-	-	-	-	29.0	0.09	57.0	0.18	-	-
20	26.9	4.0	-	-	-	-	29.0	0.11	57.0	0.23	-	-
-	28.0	1.5	-	-	37.0	0.06	-	-	-	-	-	-
-	29.0	2.0	-	-	-	-	-	-	-	-	125.0	0.30
-	30.0	1.5	-	-	38.0	0.06	-	-	-	-	-	-
-	30.0	2.0	-	-	38.0	0.08	-	-	-	-	-	-
-	33.0	1.5	-	-	45.0	0.08	-	-	-	-	-	-
25	33.7	1.5	-	-	-	-	38.0	0.07	-	-	-	-
25	33.7	1.6	-	-	-	-	38.0	0.07	72.0	0.14	-	-
25	33.7	2.0	-	-	-	-	38.0	0.09	72.0	0.18	-	-
25	33.7	2.3	-	-	-	-	38.0	1.11	72.0	0.21	-	-
25	33.7	3.0	-	-	-	-	38.0	0.13	-	-	-	-
25	33.7	3.2	-	-	-	-	38.0	0.14	72.0	0.28	-	-
25	33.7	4.5	-	-	-	-	38.0	0.20	72.0	0.40	-	-
-	35.0	1.5	-	-	50.0	0.11	-	-	-	-	-	-
-	36.0	2.0	-	-	-	-	-	-	-	-	132.0	0.40
-	38.0	1.5	-	-	52.0	0.11	-	-	-	-	-	-
-	38.0	2.0	-	-	52.0	0.15	-	-	-	-	-	-
-	40.0	1.5	-	-	60.0	0.14	-	-	-	-	-	-
-	40.0	2.0	-	-	60.0	0.16	-	-	-	-	-	-
32	42.4	1.5	-	-	-	-	48.0	0.09	-	-	-	-
32	42.4	1.6	-	-	-	-	48.0	0.11	93.0	0.22	-	-
32	42.4	2.0	-	-	-	-	48.0	0.12	93.0	0.28	-	-
32	42.4	2.6	-	-	-	-	48.0	0.16	93.0	0.37	-	-
32	42.4	3.0	-	-	-	-	48.0	0.19	-	-	-	-
32	42.4	3.2 (gas)	-	-	-	-	48.0	0.23	-	-	-	-
32	42.4	3.6	-	-	-	-	48.0	0.26	93.0	0.51	-	-
32	42.4	5.0	-	-	-	-	48.0	0.31	93.0	0.72	-	-
-	43.0	1.5	-	-	60.0	0.15	-	-	-	-	-	-
-	44.0	2.0	-	-	-	-	-	-	-	-	140.0	0.50
-	44.5	2.0	-	-	51.0	0.19	-	-	-	-	-	-
40	48.3	1.5	-	-	-	-	57.0	0.15	-	-	-	-
40	48.3	1.6	-	-	-	-	57.0	0.15	108.0	0.31	-	-
40	48.3	2.0	-	-	-	-	57.0	0.20	108.0	0.39	-	-
40	48.3	2.6	-	-	-	-	57.0	0.26	108.0	0.51	-	-

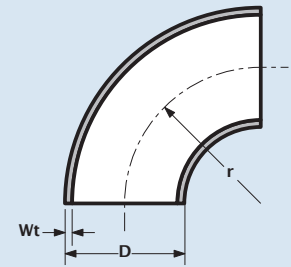
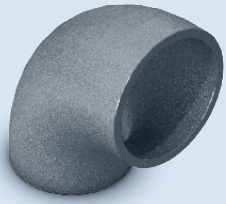
continued on next page

Bocht 90°
Elbow 90°
Coude 90°
Bogen 90°



DN15 - DN600

EN / ISO

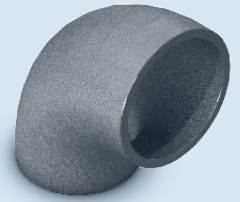
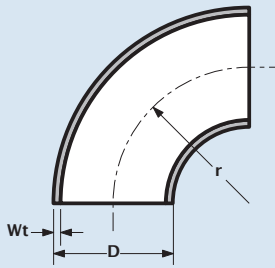


Elbow 90°													
Nominal Pipe Size	Outside Diameter	Wall thickness	Radius 2D		Radius 1.5ID		Radius 3D		Radius 5D		Radius ID+100		
			r	kg	r	kg	r	kg	r	kg	r	kg	
40	48.3	3.0	-	-	-	-	57.0	0.30	-	-	-	-	
40	48.3	3.2 (gas)	-	-	-	-	57.0	0.32	-	-	-	-	
40	48.3	3.6 (gas)	-	-	-	-	57.0	0.36	-	-	-	-	
40	48.3	5.0	-	-	-	-	57.0	0.50	108.0	1.00	-	-	
-	51.0	1.5	-	-	75.0	0.22	-	-	-	-	-	-	
-	51.0	2.0	-	-	75.0	0.30	-	-	-	-	-	-	
-	53.0	1.5	-	-	75.0	0.22	-	-	-	-	-	-	
-	54.0	2.0	-	-	75.0	0.30	-	-	-	-	150.0	0.60	
-	56.0	3.0	-	-	-	-	-	-	-	-	150.0	0.90	
50	60.3	1.5	-	-	-	-	76.0	0.26	-	-	-	-	
50	60.3	1.6	51.0	0.19	-	-	76.0	0.25	135.0	0.48	-	-	
50	60.3	2.0	51.0	0.23	-	-	76.0	0.33	135.0	0.61	-	-	
50	60.3	2.3	51.0	0.27	-	-	76.0	0.40	135.0	0.71	-	-	
50	60.3	3.0	-	-	-	-	76.0	0.52	-	-	-	-	
50	60.3	3.6 (gas)	-	-	-	-	76.0	0.59	-	-	-	-	
50	60.3	4.0	51.0	0.46	-	-	76.0	0.70	135.0	1.24	-	-	
50	60.3	5.6	51.0	0.65	-	-	76.0	0.97	135.0	1.74	-	-	
-	63.5	1.5	-	-	90.0	0.32	-	-	-	-	-	-	
-	64.0	2.0	-	-	90.0	0.43	-	-	-	-	-	-	
-	69.0	2.0	-	-	-	-	-	-	-	-	165.0	0.90	
-	70.0	2.0	-	-	95.0	0.50	-	-	-	-	-	-	
-	73.0	1.5	-	-	95.0	0.40	-	-	-	-	-	-	
65	76.1	1.5	-	-	-	-	95.0	0.40	-	-	-	-	
65	76.1	2.0	-	-	-	-	95.0	0.52	-	-	-	-	
65	76.1	2.3	63.0	0.39	-	-	95.0	0.60	175.0	1.17	-	-	
65	76.1	2.6	63.0	0.44	-	-	95.0	0.68	175.0	1.20	-	-	
65	76.1	3.0	-	-	-	-	95.0	0.78	-	-	-	-	
65	76.1	3.6 (gas)	-	-	-	-	95.0	0.94	-	-	-	-	
65	76.1	5.0	63.0	0.87	-	-	95.0	1.31	175.0	2.31	-	-	
65	76.1	7.1	63.0	1.00	-	-	95.0	1.85	175.0	3.28	-	-	
-	84.0	2.0	-	-	120.0	0.75	-	-	-	-	180.0	1.20	
-	86.0	3.0	-	-	-	-	-	-	-	-	180.0	1.90	
80	88.9	1.5	-	-	-	-	114.0	0.58	-	-	-	-	
80	88.9	2.0	76.0	0.51	-	-	114.0	0.81	205.0	1.34	-	-	
80	88.9	2.3	76.0	0.58	-	-	114.0	0.88	205.0	1.46	-	-	
80	88.9	3.0	-	-	-	-	114.0	1.13	-	-	-	-	
80	88.9	4.0 (gas)	-	-	-	-	114.0	1.65	-	-	-	-	
80	88.9	5.6	76.0	1.41	-	-	114.0	2.14	205.0	3.55	-	-	
80	88.9	8.0	76.0	2.01	-	-	114.0	3.10	205.0	5.07	-	-	
90	101.6	2.0	-	-	-	-	133.0	1.05	-	-	-	-	
90	101.6	3.0	-	-	-	-	133.0	1.55	-	-	-	-	
-	104.0	2.0	-	-	150.0	1.19	-	-	-	-	200.0	1.58	
-	106.0	3.0	-	-	-	-	-	-	-	-	200.0	2.37	
-	108.0	4.0	-	-	-	-	-	-	-	-	200.0	3.16	
100	114.3	2.0	102.0	0.87	-	-	152.0	1.29	270.0	2.36	-	-	
100	114.3	2.6	102.0	1.13	-	-	152.0	1.81	270.0	2.90	-	-	
100	114.3	3.0	-	-	-	-	152.0	1.92	-	-	-	-	
100	114.3	4.0 (gas)	-	-	-	-	152.0	2.58	-	-	-	-	
100	114.3	6.3	102.0	2.74	-	-	152.0	4.07	270.0	7.03	-	-	
100	114.3	8.8	102.0	3.83	-	-	152.0	5.68	270.0	9.82	-	-	
-	129.0	2.0	-	-	188.0	1.86	-	-	-	-	225.0	2.20	
-	131.0	3.0	-	-	-	-	-	-	-	-	225.0	3.40	
125	139.7	2.0	127.0	1.38	-	-	190.0	1.97	330.0	3.41	-	-	
125	139.7	2.6	127.0	1.79	-	-	190.0	2.56	330.0	4.43	-	-	
125	139.7	3.0	-	-	-	-	190.0	3.08	-	-	-	-	

continued on next page



EN / ISO



Elbow 90°													
Nominal Pipe Size	Outside Diameter	Wall thickness	Radius 2D		Radius 1.5ID		Radius 3D		Radius 5D		Radius ID+100		
			DN	D	Wt	r	kg	r	kg	r	kg	r	kg
125	139.7	3.2	127.0	2.20	-	-	190.0	3.15	330.0	5.45	-	-	
125	139.7	4.0	127.0	2.75	-	-	190.0	4.01	330.0	6.81	-	-	
125	139.7	6.3	127.0	4.34	-	-	190.0	6.32	330.0	10.73	-	-	
125	139.7	10.0	127.0	6.58	-	-	190.0	10.03	330.0	17.03	-	-	
-	154.0	2.0	-	-	225.0	2.69	-	-	-	-	250.0	3.00	
-	155.0	2.5	-	-	-	-	-	-	-	-	250.0	3.75	
-	156.0	3.0	-	-	225.0	4.00	-	-	-	-	250.0	4.50	
-	158.0	4.0	-	-	-	-	-	-	-	-	250.0	6.00	
-	160.0	5.0	-	-	-	-	-	-	-	-	250.0	7.50	
150	168.3	2.0	152.0	1.94	-	-	229.0	2.93	390.0	4.86	-	-	
150	168.3	2.6	152.0	2.52	-	-	229.0	3.75	390.0	6.33	-	-	
150	168.3	3.0	-	-	-	-	229.0	4.33	-	-	-	-	
150	168.3	3.2	152.0	3.10	-	-	229.0	4.62	390.0	7.79	-	-	
150	168.3	4.5	152.0	4.35	-	-	229.0	6.50	390.0	10.95	-	-	
150	168.3	7.1	152.0	6.88	-	-	229.0	10.10	390.0	17.28	-	-	
150	168.3	11.0	152.0	10.66	-	-	229.0	15.30	390.0	26.77	-	-	
-	204.0	2.0	-	-	300.0	4.76	-	-	-	-	300.0	4.73	
-	205.0	2.5	-	-	-	-	-	-	-	-	300.0	6.76	
-	206.0	3.0	-	-	300.0	7.00	-	-	-	-	300.0	6.86	
-	208.0	4.0	-	-	-	-	-	-	-	-	300.0	9.15	
-	210.0	5.0	-	-	-	-	-	-	-	-	300.0	11.43	
200	219.1	2.0	203.0	3.37	-	-	305.0	5.02	510.0	8.55	-	-	
200	219.1	2.6	203.0	4.38	-	-	305.0	6.69	510.0	11.11	-	-	
200	219.1	3.0	-	-	-	-	305.0	7.44	-	-	-	-	
200	219.1	3.6	203.0	6.07	-	-	305.0	8.94	510.0	15.38	-	-	
200	219.1	6.3	203.0	10.63	-	-	305.0	15.65	510.0	26.92	-	-	
200	219.1	8.0	203.0	13.50	-	-	305.0	19.87	510.0	34.18	-	-	
200	219.1	12.5	203.0	21.09	-	-	305.0	31.90	510.0	54.38	-	-	
-	254.0	2.0	-	-	375.0	8.42	-	-	-	-	350.0	7,542	
-	255.0	2.5	-	-	-	-	-	-	-	-	350.0	9.28	
-	256.0	3.0	-	-	-	-	-	-	-	-	350.0	10.50	
-	258.0	4.0	-	-	-	-	-	-	-	-	350.0	14.85	
-	260.0	5.0	-	-	-	-	-	-	-	-	350.0	18.56	
250	273.0	2.0	254.0	5.37	-	-	381.0	8.01	650.0	13.66	-	-	
250	273.0	3.0	-	-	-	-	381.0	12.02	-	-	-	-	
250	273.0	3.6	254.0	9.67	-	-	381.0	14.42	650.0	24.60	-	-	
250	273.0	4.0	254.0	10.74	-	-	381.0	16.03	650.0	27.35	-	-	
250	273.0	6.3	254.0	16.60	-	-	381.0	25.26	650.0	43.09	-	-	
250	273.0	10.0	254.0	26.34	-	-	381.0	36.00	650.0	61.42	-	-	
-	305.0	2.5	-	-	-	-	-	-	-	-	400.0	12.00	
-	306.0	3.0	-	-	-	-	-	-	-	-	400.0	14.00	
-	308.0	4.0	-	-	-	-	-	-	-	-	400.0	19.00	
-	310.0	5.0	-	-	-	-	-	-	-	-	400.0	23.90	
300	323.9	2.0	-	-	-	-	457.0	11.43	-	-	-	-	
300	323.9	2.6	305.0	9.95	-	-	457.0	14.85	619.0	20.11	-	-	
300	323.9	3.0	-	-	-	-	457.0	17.14	-	-	-	-	
300	323.9	4.0	305.0	15.30	-	-	457.0	22.85	619.0	29.40	-	-	
300	323.9	4.5	305.0	17.21	-	-	457.0	25.72	619.0	32.52	-	-	
300	323.9	7.1	305.0	26.74	-	-	457.0	40.58	619.0	52.21	-	-	
300	323.9	10.0	305.0	37.66	-	-	457.0	57.16	619.0	73.55	-	-	
350	355.6	2.6	356.0	12.75	-	-	533.0	19.00	850.0	28.79	-	-	
350	355.6	3.0	-	-	-	-	533.0	22.40	-	-	-	-	
350	355.6	4.0	356.0	19.62	-	-	533.0	29.87	850.0	45.25	-	-	
350	355.6	5.0	356.0	24.52	-	-	533.0	37.43	850.0	56.71	-	-	
350	355.6	8.0	356.0	38.71	-	-	533.0	59.73	850.0	90.49	-	-	

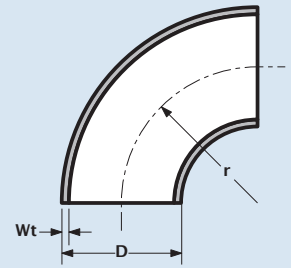
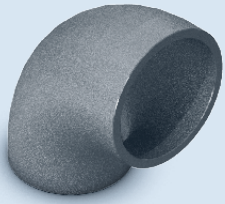
continued on next page

Bocht 90°
Elbow 90°
Coude 90°
Bogen 90°



DN15 - DN600

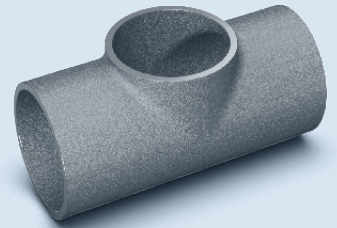
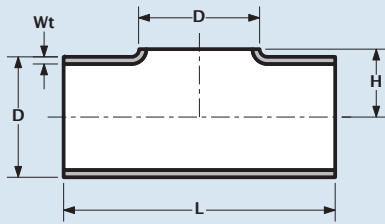
EN / ISO



Elbow 90°													
Nominal Pipe Size	Outside Diameter	Wall thickness	Radius 2D		Radius 1.5ID		Radius 3D		Radius 5D		Radius ID+100		
			r	kg	r	kg	r	kg	r	kg	r	kg	
350	355.6	11.0	356.0	53.22	-	-	533.0	82.13	850.0	124.43	-	-	
-	356.0	3.0	-	-	-	-	-	-	-	-	450.0	19.00	
-	358.0	4.0	-	-	-	-	-	-	-	-	450.0	25.00	
-	360.0	5.0	-	-	-	-	-	-	-	-	450.0	32.00	
-	362.0	6.0	-	-	-	-	-	-	-	-	450.0	38.00	
-	406.0	3.0	-	-	-	-	-	-	-	-	500.0	24.00	
400	406.4	2.6	406.0	16.68	-	-	610.0	24.75	970.0	37.39	-	-	
400	406.4	3.0	-	-	-	-	610.0	28.58	-	-	-	-	
400	406.4	4.0	406.0	25.67	-	-	610.0	38.11	970.0	57.57	-	-	
400	406.4	5.0	406.0	32.08	-	-	610.0	47.64	970.0	71.97	-	-	
400	406.4	8.8	406.0	55.80	-	-	610.0	83.85	970.0	126.67	-	-	
400	406.4	12.5	406.0	79.26	-	-	610.0	119.11	970.0	179.93	-	-	
-	408.0	4.0	-	-	-	-	-	-	-	-	500.0	32.00	
-	410.0	5.0	-	-	-	-	-	-	-	-	500.0	40.00	
-	412.0	6.0	-	-	-	-	-	-	-	-	500.0	48.00	
-	456.0	3.0	-	-	-	-	-	-	-	-	550.0	30.00	
450	457.0	3.0	-	-	-	-	686.0	35.63	-	-	-	-	
450	457.0	3.2	457.0	26.02	-	-	686.0	38.00	1122.0	59.04	-	-	
450	457.0	4.0	457.0	32.53	-	-	686.0	48.00	1122.0	74.58	-	-	
450	457.0	5.0	457.0	40.66	-	-	686.0	60.00	1122.0	93.22	-	-	
450	457.0	10.0	457.0	81.32	-	-	686.0	119.00	1122.0	184.90	-	-	
-	458.0	4.0	-	-	-	-	-	-	-	-	550.0	40.00	
-	460.0	5.0	-	-	-	-	-	-	-	-	550.0	49.00	
-	462.0	6.0	-	-	-	-	-	-	-	-	550.0	59.00	
500	508.0	3.0	-	-	-	-	762.0	57.00	-	-	-	-	
500	508.0	3.2	508.0	32.11	-	-	762.0	60.80	1245.0	94.37	-	-	
500	508.0	4.0	-	-	-	-	762.0	76.13	-	-	-	-	
500	508.0	5.0	508.0	50.17	-	-	762.0	96.25	1245.0	149.37	-	-	
500	508.0	5.6	508.0	60.21	-	-	762.0	107.80	1245.0	167.32	-	-	
500	508.0	11.0	508.0	109.50	-	-	762.0	211.75	1245.0	328.67	-	-	
-	606.0	3.0	-	-	-	-	-	-	-	-	700.0	49.00	
-	608.0	4.0	-	-	-	-	-	-	-	-	700.0	66.00	
-	610.0	5.0	-	-	-	-	-	-	-	-	700.0	83.00	
600	610.0	3.0	-	-	-	-	914.0	63.75	-	-	-	-	
600	610.0	3.2	610.0	46.26	-	-	914.0	68.00	1524.0	107.71	-	-	
600	610.0	4.0	-	-	-	-	914.0	85.00	-	-	-	-	
600	610.0	5.6	610.0	80.96	-	-	914.0	120.00	1524.0	190.09	-	-	
600	610.0	6.3	610.0	91.08	-	-	914.0	135.00	1524.0	213.85	-	-	
600	610.0	12.5	610.0	178.81	-	-	914.0	264.00	1524.0	418.18	-	-	



EN / ISO



Tee piece									
Nominal Pipe Size	Outside Diameter	Wall thickness		Short pattern			Long pattern		
				Length	Height	Weight	Length	Height	Weight
NPS	D	Wt	L	H	kg	L	H	kg	
-	18.0	1.5	-	-	-	50.0	25.0	0.04	
-	20.0	1.5	-	-	-	50.0	25.0	0.04	
15	21.3	1.6	-	-	-	50.0	25.0	0.04	
15	21.3	2.0	51.0	12.0	0.04	50.0	25.0	0.05	
15	21.3	3.2	-	-	-	50.0	25.0	0.08	
15	21.3	4.0	-	-	-	50.0	25.0	0.10	
-	23.0	1.5	51.0	13.0	0.04	50.0	25.0	0.05	
-	25.0	1.5	57.0	14.0	0.05	56.0	28.0	0.06	
20	26.9	1.6	-	-	-	58.0	29.0	0.06	
20	26.9	2.0	57.0	15.0	0.06	58.0	29.0	0.08	
20	26.9	3.2	-	-	-	58.0	29.0	0.13	
20	26.9	4.0	-	-	-	58.0	29.0	0.16	
-	28.0	1.5	57.0	15.5	0.05	56.0	28.0	0.07	
-	30.0	1.5	76.0	17.0	0.08	76.0	38.0	0.11	
-	30.0	2.0	76.0	17.0	0.09	76.0	38.0	0.12	
-	33.0	1.5	76.0	19.0	0.11	76.0	38.0	0.14	
25	33.7	1.6	-	-	-	76.0	38.0	0.11	
25	33.7	2.0	76.0	19.0	0.11	76.0	38.0	0.14	
25	33.7	2.3	-	-	-	76.0	38.0	0.16	
25	33.7	3.0	76.0	19.0	0.17	76.0	38.0	0.22	
25	33.7	3.2	-	-	-	76.0	38.0	0.24	
25	33.7	4.5	-	-	-	76.0	38.0	0.30	
-	34.0	2.0	76.0	19.0	0.11	76.0	38.0	0.15	
-	38.0	1.5	95.0	20.5	0.14	94.0	47.0	0.18	
-	40.0	1.5	95.0	22.0	0.15	-	-	-	
32	42.4	1.6	-	-	-	96.0	48.0	0.18	
32	42.4	2.0	95.0	24.0	0.17	96.0	48.0	0.23	
32	42.4	2.6	-	-	-	96.0	48.0	0.30	
32	42.4	3.0	95.0	24.0	0.26	96.0	48.0	0.34	
32	42.4	3.6	-	-	-	96.0	48.0	0.41	
32	42.4	5.0	-	-	-	96.0	48.0	0.57	
-	43.0	1.5	95.0	23.8	0.17	94.0	47.0	0.22	
-	44.0	2.0	95.0	25.6	0.17	94.0	47.0	0.23	
-	44.5	1.5	95.0	25.6	0.17	94.0	47.0	0.23	
-	44.5	2.0	-	-	-	94.0	47.0	0.24	
40	48.3	1.6	-	-	-	114.0	57.0	0.25	
40	48.3	2.0	114.0	26.0	0.23	114.0	57.0	0.31	
40	48.3	2.6	-	-	-	114.0	57.0	0.40	
40	48.3	3.0	114.0	26.0	0.35	114.0	57.0	0.46	
40	48.3	3.6	-	-	-	114.0	57.0	0.55	
40	48.3	5.0	-	-	-	114.0	57.0	0.77	
-	50.8	1.5	114.0	28.00	0.18	114.0	57.0	0.24	
-	53.0	1.5	114.0	30.00	0.20	114.0	57.0	0.29	
-	54.0	2.0	114.0	30.00	0.26	114.0	57.0	0.34	
50	60.3	1.6	100.0	33.15	0.22	128.0	64.0	0.33	
50	60.3	2.0	100.0	33.15	0.27	128.0	64.0	0.41	

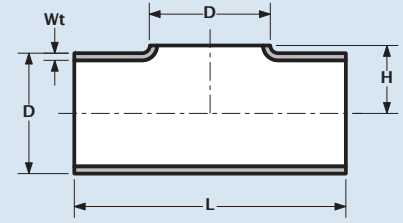
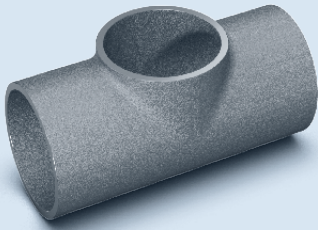
continued on next page

Tee stuk
Tee piece
Té
Tee stück



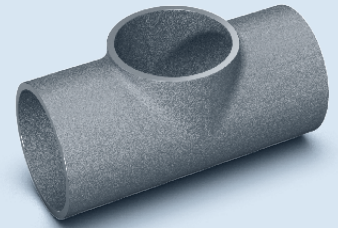
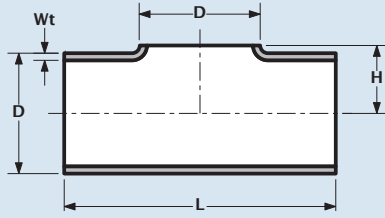
DN15 - DN600
short / long pattern

EN / ISO



Tee piece									
Nominal Pipe Size	Outside Diameter	Wall thickness	Short pattern			Long pattern			
			Length	Height	Weight	Length	Height	Weight	
NPS	D	Wt	L	H	kg	L	H	kg	
50	60.3	2.3	100.0	33.15	0.31	128.0	64.0	0.47	
50	60.3	2.9	100.0	33.15	0.39	128.0	64.0	0.59	
50	60.3	3.0	127.0	34.00	0.46	128.0	64.0	0.61	
50	60.3	4.0	100.0	33.15	0.54	128.0	64.0	0.81	
50	60.3	5.6	100.0	33.15	0.76	128.0	64.0	1.14	
-	63.5	1.5	127.0	35.00	0.27	128.0	64.0	0.35	
-	64.0	2.0	128.0	35.00	0.36	128.0	64.0	0.43	
-	69.0	2.0	127.0	38.00	0.37	128.0	64.0	0.48	
-	73.0	1.5	152.0	40.00	0.37	152.0	76.0	0.58	
-	74.0	2.0	152.0	40.00	0.49	152.0	76.0	0.59	
-	76.0	1.5	152.0	42.00	0.52	152.0	76.0	0.67	
65	76.1	1.6	130.0	42.05	0.32	152.0	76.0	0.48	
65	76.1	2.0	152.0	42.00	0.45	152.0	76.0	0.60	
65	76.1	2.3	130.0	42.05	0.48	152.0	76.0	0.69	
65	76.1	2.6	130.0	42.05	0.52	152.0	76.0	0.78	
65	76.1	2.9	130.0	42.05	0.58	152.0	76.0	0.87	
65	76.1	3.0	152.0	42.00	0.71	152.0	76.0	0.94	
65	76.1	5.0	130.0	42.05	1.05	152.0	76.0	1.57	
65	76.1	7.1	130.0	42.05	1.49	152.0	76.0	2.23	
-	84.0	2.0	171.0	46.50	0.63	170.0	85.0	0.77	
-	86.0	3.0	171.0	47.00	0.95	170.0	85.0	1.16	
80	88.9	2.0	160.0	49.45	0.57	172.0	86.0	0.86	
80	88.9	2.3	160.0	49.45	0.66	172.0	86.0	0.99	
80	88.9	2.9	160.0	49.45	0.83	172.0	86.0	1.25	
80	88.9	3.0	171.0	48.50	1.00	172.0	86.0	1.26	
80	88.9	3.2	160.0	49.45	0.89	172.0	86.0	1.34	
80	88.9	5.6	160.0	49.45	1.57	172.0	86.0	2.35	
80	88.9	8.0	160.0	49.45	2.24	172.0	86.0	3.36	
-	104.0	2.0	210.0	56.30	0.95	210.0	105.0	1.19	
-	106.0	3.0	210.0	56.50	1.43	210.0	105.0	1.47	
100	114.3	2.0	200.0	64.15	0.89	210.0	105.0	1.27	
100	114.3	2.6	200.0	64.15	1.16	210.0	105.0	1.65	
100	114.3	2.9	200.0	64.15	1.29	210.0	105.0	1.84	
100	114.3	3.0	210.0	63.00	1.58	210.0	105.0	1.98	
100	114.3	3.6	200.0	64.15	1.67	210.0	105.0	2.38	
100	114.3	6.3	200.0	64.15	2.91	210.0	105.0	4.16	
100	114.3	8.8	200.0	64.15	4.07	210.0	105.0	5.81	
-	129.0	2.0	248.0	70.00	1.42	548.0	124.0	1.76	
-	131.0	3.0	248.0	72.00	2.12	548.0	124.0	2.99	
125	139.7	2.0	250.0	77.85	2.23	148.0	124.0	1.86	
125	139.7	2.6	250.0	77.85	2.90	148.0	124.0	2.42	
125	139.7	3.0	248.0	76.00	3.35	148.0	124.0	2.79	
125	139.7	3.2	250.0	77.85	3.58	148.0	124.0	2.98	
125	139.7	4.0	250.0	77.85	4.46	148.0	124.0	3.72	
125	139.7	6.3	250.0	77.85	7.03	148.0	124.0	5.86	
125	139.7	10.0	250.0	77.85	11.16	148.0	124.0	9.30	

continued on next page



Tee piece									
Nominal Pipe Size	Outside Diameter	Wall thickness	Short pattern			Long pattern			
			Length	Height	Weight	Length	Height	Weight	
NPS	D	Wt	L	H	kg	L	H	kg	
-	154.0	2.0	286.0	84.00	1.56	286.0	143.0	2.03	
-	156.0	3.0	286.0	85.00	2.09	286.0	143.0	2.99	
150	168.3	2.0	300.0	94.15	2.68	286.0	143.0	2.98	
150	168.3	2.6	300.0	94.15	3.41	286.0	143.0	3.76	
150	168.3	3.0	284.0	92.00	3.05	286.0	143.0	3.81	
150	168.3	3.2	300.0	94.15	3.65	286.0	143.0	4.06	
150	168.3	4.5	300.0	94.15	5.15	286.0	143.0	5.72	
150	168.3	7.1	300.0	94.15	8.12	286.0	143.0	9.02	
150	168.3	11.0	300.0	94.15	12.57	286.0	143.0	13.97	
-	204.0	2.0	356.0	110.00	3.79	356.0	178.0	3.84	
-	206.0	3.0	356.0	110.00	4.69	356.0	178.0	5.72	
200	219.1	2.0	400.0	121.55	3.91	356.0	178.0	4.34	
200	219.1	2.6	400.0	121.55	5.08	356.0	178.0	5.64	
200	219.1	3.0	358.0	122.00	4.69	356.0	178.0	6.51	
200	219.1	3.6	400.0	121.55	7.03	356.0	178.0	7.81	
200	219.1	6.3	400.0	121.55	12.30	356.0	178.0	13.67	
200	219.1	8.0	400.0	121.55	15.62	356.0	178.0	17.36	
200	219.1	12.5	400.0	121.55	24.42	356.0	178.0	27.13	
-	256.0	3.0	500.0	264.00	9.35	-	-	-	
250	273.0	2.0	500.0	149.50	6.31	432.0	216.0	7.01	
250	273.0	3.0	433.0	151.00	7.95	-	-	-	
250	273.0	3.6	500.0	149.50	11.36	432.0	216.0	12.62	
250	273.0	4.0	500.0	149.50	12.63	432.0	216.0	14.03	
250	273.0	6.3	500.0	149.50	19.88	432.0	216.0	22.09	
250	273.0	10.0	500.0	149.50	31.55	432.0	216.0	35.06	
-	306.0	3.0	600.0	316.00	13.40	-	-	-	
300	323.9	2.6	600.0	176.95	17.28	508.0	254.0	15.03	
300	323.9	3.0	508.0	177.00	-	-	-	-	
300	323.9	4.0	600.0	176.95	26.59	508.0	254.0	23.12	
300	323.9	4.5	600.0	176.95	29.91	508.0	254.0	26.01	
300	323.9	7.1	600.0	176.95	47.20	508.0	254.0	41.04	
300	323.9	10.0	600.0	176.95	66.47	508.0	254.0	57.80	
350	355.6	2.6	700.0	194.80	26.42	558.0	279.0	22.97	
350	355.6	4.0	700.0	194.80	40.63	558.0	279.0	35.33	
350	355.6	5.0	700.0	194.80	50.78	558.0	279.0	44.16	
350	355.6	8.0	700.0	194.80	81.26	558.0	279.0	70.66	
350	355.6	11.0	700.0	194.80	111.73	558.0	279.0	97.16	
400	406.4	2.6	800.0	223.20	39.31	610.0	305.0	32.76	
400	406.4	4.0	800.0	223.20	60.48	610.0	305.0	50.40	
400	406.4	5.0	800.0	223.20	75.60	610.0	305.0	63.00	
400	406.4	8.8	800.0	223.20	133.06	610.0	305.0	110.88	
400	406.4	12.5	800.0	223.20	189.00	610.0	305.0	157.50	
450	457.0	3.2	-	-	-	686.0	343.0	53.02	
450	457.0	4.0	-	-	-	686.0	343.0	66.27	
450	457.0	5.0	-	-	-	686.0	343.0	82.84	
450	457.0	10.0	-	-	-	686.0	343.0	165.68	

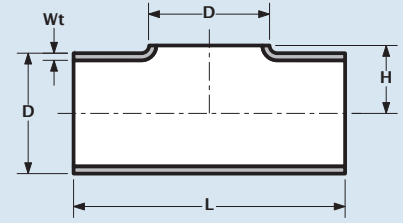
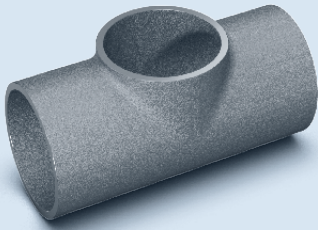
continued on next page

Tee stuk
Tee piece
Té
Tee stück



DN15 - DN600
short / long pattern

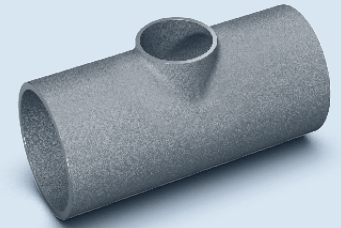
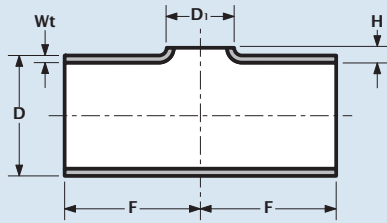
EN / ISO



Tee piece									
Nominal Pipe Size	Outside Diameter	Wall thickness	Short pattern				Long pattern		
			Length	Height	Weight	Length	Height	Weight	
NPS	D	Wt	L	H	kg	L	H	kg	
500	508.0	3.2	-	-	-	762.0	381.0	69.76	
500	508.0	5.0	-	-	-	762.0	381.0	109.00	
500	508.0	5.6	-	-	-	762.0	381.0	122.08	
500	508.0	11.0	-	-	-	762.0	381.0	239.80	
600	610.0	3.2	-	-	-	864.0	432.0	112.32	
600	610.0	5.6	-	-	-	864.0	432.0	196.56	
600	610.0	6.3	-	-	-	864.0	432.0	211.13	
600	610.0	12.5	-	-	-	864.0	432.0	438.75	



EN / ISO



Reducing Tee											
Nominal pipe size		Outside diameter		Wall thickness		Length		Height		Weight	
DN	D	D ₁	Wt	F	H					kg	
15 - 10	21,3	17,2	2	50	1,4					0,06	
20 - 10	26,9	17,2	2	58	1,6					0,08	
20 - 15	26,9	21,3	2	58	1,6					0,08	
25 - 10	33,7	17,2	2	76	2,2					0,13	
25 - 15	33,7	21,3	2	76	2,2					0,13	
25 - 20	33,7	26,9	2	76	2,2					0,13	
32 - 10	42,4	17,2	2	96	1,8					0,20	
32 - 15	42,4	12,3	2	96	1,8					0,20	
32 - 20	42,4	26,9	2	96	1,8					0,20	
32 - 25	42,4	33,7	2	96	1,8					0,20	
40 - 10	48,3	17,2	2	114	1,9					0,28	
40 - 15	48,3	21,3	2	114	1,9					0,28	
40 - 20	48,3	26,9	2	114	1,9					0,28	
40 - 25	48,3	33,7	2	114	1,9					0,28	
40 - 32	48,3	42,4	2	114	1,9					0,28	
50 - 10	60,3	17,2	2	128	2,9					0,39	
50 - 15	60,3	21,3	2	128	2,9					0,39	
50 - 20	60,3	26,9	2	128	2,9					0,39	
50 - 25	60,3	33,7	2	128	2,9					0,39	
50 - 32	60,3	42,4	2	128	2,9					0,39	
50 - 40	60,3	48,3	2	128	2,9					0,39	
65 - 10	76,1	17,2	2	152	3					0,58	
65 - 15	76,1	21,3	2	152	3					0,58	
65 - 20	76,1	26,9	2	152	3					0,58	
65 - 25	76,1	33,7	2	152	3					0,58	
65 - 32	76,1	42,4	2	152	3					0,58	
65 - 40	76,1	48,3	2	152	3					0,58	
65 - 50	76,1	60,3	2	152	3					0,58	
80 - 10	88,9	17,2	2	172	3,6					0,77	
80 - 15	88,9	21,3	2	172	3,6					0,77	
80 - 20	88,9	26,9	2	172	3,6					0,77	
80 - 25	88,9	33,7	2	172	3,6					0,77	
80 - 32	88,9	42,4	2	172	3,6					0,77	
80 - 40	88,9	48,3	2	172	3,6					0,77	
80 - 50	88,9	60,3	2	172	3,6					0,77	
80 - 65	88,9	76,1	2	172	3,6					0,77	
100 - 10	114,3	17,2	2	210	3,9					1,21	
100 - 15	114,3	21,3	2	210	3,9					1,21	
100 - 20	114,3	26,9	2	210	3,9					1,21	
100 - 25	114,3	33,7	2	210	3,9					1,21	
100 - 32	114,3	42,4	2	210	3,9					1,21	
100 - 40	114,3	48,3	2	210	3,9					1,21	
100 - 50	114,3	60,3	2	210	3,9					1,21	
100 - 65	114,3	76,1	2	210	3,9					1,21	
100 - 80	114,3	88,9	2	210	3,9					1,21	
125 - 15	139,7	21,3	2	248	6,2					1,75	

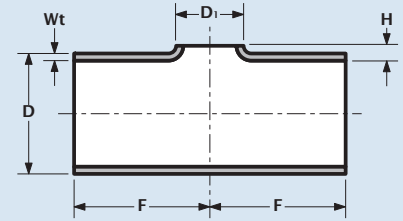
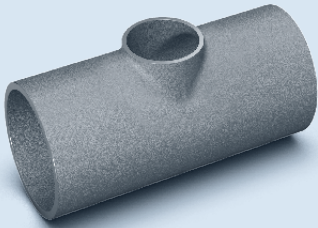
*Disclaimer: Dimensions are according to table A.2 from EN 10253-4 / ISO 5152 - continued on next page

Verloop T-stuk
Reducing tee
Té réduit
Reduzier T-stück



EN 10523-4 Type A / ISO 5251
DN15 - DN250

EN / ISO

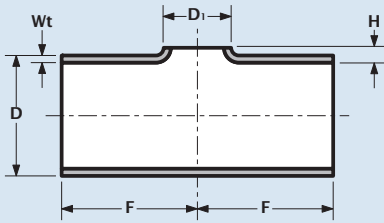
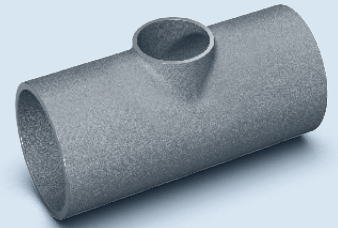


Reducing Tee										
Nominal pipe size		Outside diameter		Thickness		Length		Height		Weight
DN	D	D ₁	T	F	H			kg		
125 - 20	139,7	26,9	2	248	6,2			1,75		
125 - 25	139,7	33,7	2	248	6,2			1,75		
125 - 32	139,7	42,4	2	248	6,2			1,75		
125 - 40	139,7	48,3	2	248	6,2			1,75		
125 - 50	139,7	60,3	2	248	6,2			1,75		
125 - 65	139,7	76,1	2	248	6,2			1,75		
125 - 80	139,7	88,9	2	248	6,2			1,75		
125 - 100	139,7	114,3	2	248	6,2			1,75		
125 - 15	139,7	21,3	2,9	248	6,2			2,50		
125 - 20	139,7	26,9	2,9	248	6,2			2,50		
125 - 25	139,7	33,7	2,9	248	6,2			2,50		
125 - 32	139,7	42,4	2,9	248	6,2			2,50		
125 - 40	139,7	48,3	2,9	248	6,2			2,50		
125 - 50	139,7	60,3	2,9	248	6,2			2,50		
125 - 65	139,7	76,1	2,9	248	6,2			2,50		
125 - 80	139,7	88,9	2,9	248	6,2			2,50		
125 - 100	139,7	114,3	2	248	6,2			2,50		
150 - 20	168,3	26,9	2	286	7,9			2,42		
150 - 25	168,3	33,7	2	286	7,9			2,42		
150 - 32	168,3	42,4	2	286	7,9			2,42		
150 - 40	168,3	48,3	2	286	7,9			2,42		
150 - 50	168,3	60,3	2	286	7,9			2,42		
150 - 65	168,3	76,1	2	286	7,9			2,42		
150 - 80	168,3	88,9	2	286	7,9			2,42		
150 - 100	168,3	114,3	2	286	7,9			2,42		
150 - 125	168,3	139,7	2	286	7,9			2,42		
150 - 20	168,3	26,9	2,9	286	7,9			3,51		
150 - 25	168,3	33,7	2,9	286	7,9			3,51		
150 - 32	168,3	42,4	2,9	286	7,9			3,51		
150 - 40	168,3	48,3	2,9	286	7,9			3,51		
150 - 50	168,3	60,3	2,9	286	7,9			3,51		
150 - 65	168,3	76,1	2,9	286	7,9			3,51		
150 - 80	168,3	88,9	2,9	286	7,9			3,51		
150 - 100	168,3	114,3	2,9	286	7,9			3,51		
150 - 125	168,3	139,7	2,9	286	7,9			3,51		
200 - 25	219,1	33,7	2	356	8,5			3,93		
200 - 32	219,1	42,4	2	356	8,5			3,93		
200 - 40	219,1	48,3	2	356	8,5			3,93		
200 - 50	219,1	60,3	2	356	8,5			3,93		
200 - 65	219,1	76,1	2	356	8,5			3,93		
200 - 80	219,1	88,9	2	356	8,5			3,93		
200 - 100	219,1	114,3	2	356	8,5			3,93		
200 - 125	219,1	139,7	2	356	8,5			3,93		
200 - 150	219,1	168,3	2	356	8,5			3,93		
200 - 25	219,1	33,7	2,9	356	8,5			4,69		
200 - 32	219,1	42,4	2,9	356	8,5			4,69		

*Disclaimer: Dimensions are according to table A.2 from EN 10253-4 / ISO 5152 - continued on next page



EN / ISO



Reducing Tee									
Nominal pipe size		Outside diameter		Thickness		Length	Height		Weight
DN	D	D ₁	T	F	H	kg			
200 - 40	219,1	48,3	2,9	356	8,5	4,69			
200 - 50	219,1	60,3	2,9	356	8,5	4,69			
200 - 65	219,1	76,1	2,9	356	8,5	4,69			
200 - 80	219,1	88,9	2,9	356	8,5	4,69			
200 - 100	219,1	114,3	2,9	356	8,5	4,69			
200 - 125	219,1	139,7	2,9	356	8,5	4,69			
200 - 150	219,1	168,3	2,9	356	8,5	4,69			
250 - 32	273	42,4	2,9	432	11,5	7,85			
250 - 40	273	48,3	2,9	432	11,5	7,85			
250 - 50	273	60,3	2,9	432	11,5	7,85			
250 - 65	273	76,1	2,9	432	11,5	7,85			
250 - 80	273	88,9	2,9	432	11,5	7,85			
250 - 100	273	114,3	2,9	432	11,5	7,85			
250 - 125	273	139,7	2,9	432	11,5	7,85			
250 - 150	273	168,3	2,9	432	11,5	7,85			
250 - 200	273	219,1	2,9	432	11,5	7,85			

*Disclaimer: Dimensions are according to table A.2 from EN 10253-4 / ISO 5152

Concentrisch en excentrisch verloopstuk

Concentric and eccentric reducer

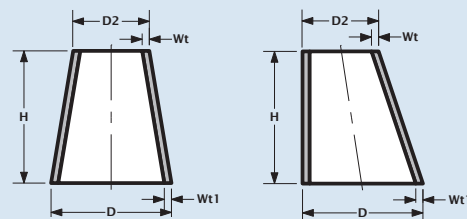
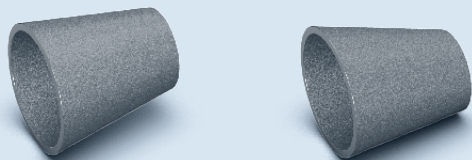
Réduction concentrique et excentrique

Konzentrische und exzentrische reduzierung



DN8 - DN600

EN / ISO



Concentric and eccentric reducer						
Nominal Pipe Size	Outside Diameter		Wall thickness		Height	Weight
	D	D2	Wt	Wt1	H	kg
10-8	17.2	13.5	2.0	2.0	11.1	0.01
15-8	21.3	13.5	2.0	2.0	23.4	0.02
15-10	21.3	17.2	2.0	2.0	12.3	0.01
-	25.0	20.0	2.0	2.0	15.0	0.02
20-8	26.9	13.5	2.0	2.0	40.2	0.04
20-10	26.9	17.2	2.0	2.0	29.1	0.03
20-15	26.9	21.3	1.6	1.6	38.0	0.03
20-15	26.9	21.3	2.0	2.0	16.8 / 38.0	0.02 / 0.04
-	30.0	20.0	2.0	2.0	30.0	0.04
-	30.0	25.0	2.0	2.0	38.0	0.05
25-8	33.7	13.5	2.0	2.0	60.6	0.07
25-10	33.7	17.2	2.0	2.0	38.0	0.05
25-15	33.7	21.3	1.6	1.6	51.0	0.06
25-15	33.7	21.3	2.0	2.0	37.2 / 51.0	0.05 / 0.07
25-15	33.7	21.3	2.6	2.6	51.0	0.08
25-20	33.7	26.9	1.6	1.6	51.0	0.04
25-20	33.7	26.9	2.0	2.0	20.4	0.03
25-20	33.7	26.9	2.6	2.6	51.0	0.09
-	38.0	20.0	2.0	2.0	54.0	0.07
-	38.0	25.0	2.0	2.0	39.0	0.06
32-8	42.4	13.5	2.0	2.0	86.7	0.11
32-10	42.4	17.2	2.0	2.0	38.0	0.05
32-15	42.4	21.3	1.6	1.6	51.0	0.06
32-15	42.4	21.3	2.0	2.0	51.0 / 63.3	0.08 / 0.10
32-15	42.4	21.3	2.6	2.6	51.0	0.05
32-20	42.4	26.9	1.6	1.6	51.0	0.06
32-20	42.4	26.9	2.0	2.0	46.5 / 51.0	0.08 / 0.09
32-20	42.4	26.9	2.6	2.6	51.0	0.11
32-25	42.4	33.7	1.6	1.6	51.0	0.08
32-25	42.4	33.7	2.0	2.0	26.1 / 51.0	0.05 / 0.09
32-25	42.4	33.7	2.6	2.6	51.0	0.12
32-25	42.4	33.7	3.2	3.2	51.0	0.14
-	44.5	20.0	2.0	2.0	73.5	0.11
-	44.5	25.0	2.0	2.0	58.5	0.10
-	44.5	30.0	2.0	2.0	43.5	0.08
40-10	48.3	17.2	2.0	2.0	38.0	0.06
40-15	48.3	21.3	2.0	2.0	64.0 / 81.0	0.05 / 0.11
40-15	48.3	21.3	2.6	2.6	64.0	0.13
40-20	48.3	26.9	1.6	1.6	64.0	0.10
40-20	48.3	26.9	2.0	2.0	64.0 / 64.2	0.11 / 0.11
40-20	48.3	26.9	2.6	2.6	64.0	0.15
40-25	48.3	33.7	1.6	1.6	64.0	0.11
40-25	48.3	33.7	2.0	2.0	43.8 / 64.0	0.09 / 0.13
40-25	48.3	33.7	2.6	2.6	64.0	0.16
40-25	48.3	33.7	3.2	3.2	64.0	0.19
40-32	48.3	42.4	1.6	1.6	64.0	0.11
40-32	48.3	42.4	2.0	2.0	17.7 / 64.0	0.04 / 0.14

Concentric and eccentric reducer						
Nominal Pipe Size	Outside Diameter		Wall thickness		Height	Weight
	D	D2	Wt	Wt1	H	kg
40-32	48.3	42.4	2.6	2.6	64.0	0.05
40-32	48.3	42.4	3.2	3.2	64.0	0.22
-	54.0	30.0	2.0	2.0	72.0	0.14
-	54.0	44.5	2.0	2.0	28.5	0.07
50-15	60.3	21.3	2.0	2.0	76.0 / 117.0	0.15 / 0.23
50-15	60.3	21.3	2.6	2.6	76.0	0.19
50-20	60.3	26.9	2.0	2.0	76.0 / 100.2	0.16 / 0.21
50-20	60.3	26.9	2.6	2.6	76.0	0.20
50-25	60.3	33.7	1.6	1.6	76.0	0.14
50-25	60.3	33.7	2.0	2.0	76.0 / 79.8	0.17 / 0.18
50-25	60.3	33.7	2.6	2.6	76.0	0.05
50-32	60.3	42.4	1.6	1.6	76.0	0.15
50-32	60.3	42.4	2.0	2.0	53.7 / 76.0	0.13 / 0.19
50-32	60.3	42.4	2.6	2.6	76.0	0.24
50-40	60.3	48.3	1.6	1.6	76.0	0.16
50-40	60.3	48.3	2.0	2.0	36.0 / 76.0	0.09 / 0.20
50-40	60.3	48.3	2.6	2.6	76.0	0.26
-	70.0	44.5	2.0	2.0	76.5	0.21
-	70.0	54.0	2.0	2.0	48.0	0.14
65-25	76.1	33.7	2.0	2.0	127.2	0.34
65-32	76.1	42.4	1.6	1.6	89.0	0.22
65-32	76.1	42.4	2.0	2.0	101.1	0.29
65-40	76.1	48.3	1.6	1.6	89.0	0.19
65-40	76.1	48.3	2.0	2.0	83.4	0.25
65-50	76.1	60.3	1.6	1.6	89.0	0.12
65-50	76.1	60.3	2.0	2.0	47.4	0.15
65-50	76.1	60.3	3.0	3.0	47.4	0.23
65-50	76.1	60.3	3.0	3.0	89.0	0.44
-	84.0	44.5	2.0	2.0	118.5	0.37
-	84.0	54.0	2.0	2.0	90.0	0.30
-	84.0	70.0	2.0	2.0	42.0	0.16
80-25	88.9	33.7	2.0	2.0	165.6	0.49
80-32	88.9	42.4	2.0	2.0	139.5	0.45
80-40	88.9	48.3	1.6	2.0	89.0	0.32
80-40	88.9	48.3	2.0	2.0	121.8	0.41
80-50	88.9	60.3	1.6	2.0	89.0	0.30
80-50	88.9	60.3	2.0	2.0	85.8	0.31
80-50	88.9	60.3	3.0	3.0	85.8 / 89.0	0.46 / 0.48
80-65	88.9	76.1	1.6	2.0	89.0	0.34
80-65	88.9	76.1	2.0	2.0	38.4	0.15
80-65	88.9	76.1	3.0	3.0	38.4 / 89.0	0.23 / 0.53
-	104.0	54.0	2.0	2.0	150.0	0.58
-	104.0	70.0	2.0	2.0	102.0	0.43
-	104.0	76.1	2.0	2.0	83.7	0.37
-	104.0	84.0	2.0	2.0	60.0	0.28
100-25	114.3	33.7	2.0	2.0	241.8	0.87
100-32	114.3	42.4	2.0	2.0	215.7	0.83

continued on next page



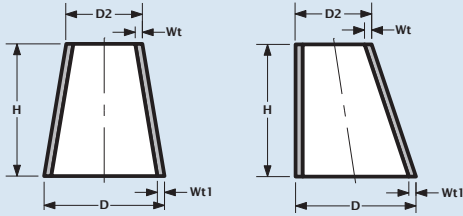
Concentrisch en excentrisch verloopstuk

Concentric and eccentric reducer

Réduction concentrique et excentrique

Konzentrische und exzentrische Reduzierung

EN / ISO



Concentric and eccentric reducer						
Nominal Pipe Size	Outside Diameter		Wall thickness		Height	Weight
	NPS	D	D2	Wt	Wt1	H
100-40	114.3	48.3	2.0	2.0	198.0	0.79
100-50	114.3	60.3	1.6	2.0	102.0	0.41
100-50	114.3	60.3	2.0	2.0	162.0	0.69
100-50	114.3	60.3	3.0	3.0	102.0 / 162.0	0.50 / 1.03
100-65	114.3	76.1	1.6	2.0	102.0	0.48
100-65	114.3	76.1	2.0	2.0	114.6	0.54
100-65	114.3	76.1	3.0	3.0	102.0 / 114.6	0.71 / 0.79
100-80	114.3	88.9	2.0	2.0	76.2	0.38
100-80	114.3	88.9	2.0	2.0	102.0	0.51
100-80	114.3	88.9	3.0	3.0	76.2 / 102.0	0.56 / 0.76
-	129.0	70.0	2.0	2.0	177.0	0.86
-	129.0	76.1	2.0	2.0	158.7	0.80
-	129.0	84.0	2.0	2.0	135.0	0.71
-	129.0	104.0	2.0	2.0	75.0	0.43
125-50	139.7	60.3	2.0	2.0	238.2	1.17
125-50	139.7	60.3	3.0	3.0	238.2	0.05
125-65	139.7	76.1	1.6	2.0	127.0	0.66
125-65	139.7	76.1	2.0	2.0	190.8	1.01
125-65	139.7	76.1	3.0	3.0	127.0 / 190.8	1.00 / 1.50
125-80	139.7	88.9	2.0	2.0	152.4	0.86
125-80	139.7	88.9	2.0	2.0	127.0	0.71
125-80	139.7	88.9	3.0	3.0	127.0 / 152.4	1.06 / 1.27
125-100	139.7	114.3	2.0	2.0	76.2	0.48
125-100	139.7	114.3	2.0	2.0	127.0	0.79
125-100	139.7	114.3	3.0	3.0	76.2 / 127.0	0.71 / 1.18
-	154.0	84.0	2.0	2.0	210.0	1.23
-	154.0	104.0	2.0	2.0	150.0	0.95
-	154.0	129.0	2.0	2.0	75.0	0.05
150-50	168.3	60.3	2.0	2.0	324.0	1.82
150-50	168.3	60.3	3.0	3.0	324.0	2.71
150-65	168.3	76.1	2.0	2.0	276.6	1.67
150-65	168.3	76.1	3.0	3.0	140.0 / 276.6	1.25 / 2.48
150-80	168.3	88.9	2.0	2.0	140.0	0.89
150-80	168.3	88.9	2.0	2.0	238.2	1.51
150-80	168.3	88.9	3.0	3.0	127.0 / 140.0	1.20 / 1.32
150-100	168.3	114.3	2.0	2.0	140.0	0.98
150-100	168.3	114.3	2.0	2.0	162.0	1.13
150-100	168.3	114.3	3.0	3.0	140.0 / 162.0	1.45 / 1.68
150-125	168.3	139.7	2.0	2.0	85.8	0.05
150-125	168.3	139.7	2.0	2.0	140.0	1.06
150-125	168.3	139.7	3.0	3.0	85.8 / 140.0	0.97 / 1.59
-	204.0	84.0	2.0	2.0	360.0	2.56
-	204.0	104.0	2.0	2.0	300.0	2.28
-	204.0	129.0	2.0	2.0	225.0	1.85
-	204.0	154.0	2.0	2.0	150.0	1.33
-	206.0	156.0	3.0	3.0	150.0	2.01

Concentric and eccentric reducer						
Nominal Pipe Size	Outside Diameter		Wall thickness		Height	Weight
	NPS	D	D2	Wt	Wt1	H
200-100	219.1	114.3	2.0	2.0	152.0	1.25
200-100	219.1	114.3	2.0	2.0	314.4	2.59
200-100	219.1	114.3	3.0	3.0	178.0 / 314.4	2.19 / 3.87
200-125	219.1	139.7	2.0	2.0	152.0	1.35
200-125	219.1	139.7	2.0	2.0	238.2	2.12
200-125	219.1	139.7	3.0	3.0	238.2	3.69
200-125	219.1	139.7	3.0	3.0	178.0	2.36
200-150	219.1	168.3	2.0	2.0	152.4	1.46
200-150	219.1	168.3	2.0	2.0	152.0	0.67
200-150	219.1	168.3	3.0	3.0	152.4 / 178.0	2.18 / 2.55
200-150	219.1	168.3	4.0	4.0	152.4	2.90
-	254.0	154.0	2.0	2.0	300.0	3.04
-	254.0	204.0	2.0	2.0	150.0	1.71
-	256.0	156.0	3.0	3.0	300.0	4.58
-	256.0	206.0	3.0	3.0	150.0	2.57
250-125	273.0	139.7	2.0	2.0	178.0	1.81
250-150	273.0	168.3	2.0	2.0	178.0	1.95
250-150	273.0	168.3	2.0	2.0	314.1	3.44
250-150	273.0	168.3	3.0	3.0	314.1	5.14
250-150	273.0	168.3	4.0	4.0	314.1	7.02
250-200	273.0	219.1	2.0	2.0	161.7	1.98
250-200	273.0	219.1	2.0	2.0	178.0	2.17
250-200	273.0	219.1	3.0	3.0	161.7	2.95
250-200	273.0	219.1	4.0	4.0	161.7	3.92
-	304.0	204.0	2.0	2.0	300.0	3.79
-	304.0	254.0	2.0	2.0	150.0	2.08
-	306.0	206.0	3.0	3.0	300.0	5.70
300-150	323.9	168.3	2.0	2.6	203.0	4.01
300-200	323.9	219.1	2.0	2.0	314.4	4.24
300-200	323.9	219.1	2.0	2.6	203.0	5.94
300-200	323.9	219.1	3.0	3.0	314.4	6.34
300-200	323.9	219.1	4.0	4.0	314.4	8.42
300-250	323.9	273.0	2.0	2.0	152.7	2.27
300-250	323.9	273.0	2.0	2.6	203.0	3.12
300-250	323.9	273.0	3.0	3.0	152.7	3.39
300-250	323.9	273.0	4.0	4.0	152.7	5.33
350-200	355.6	219.1	2.0	2.6	330.0	6.94
350-250	355.6	273.0	2.0	2.6	330.0	7.24
350-300	355.6	323.9	2.6	2.6	330.0	9.17
400-250	406.0	323.9	2.0	2.6	356.0	4.80
400-300	406.4	323.9	2.6	2.6	356.0	5.83
400-300	406.4	323.9	3.0	3.0	247.5	6.73
400-300	406.4	323.9	4.0	4.0	247.5	8.95
400-350	406.4	355.6	2.6	2.6	356.0	7.51
400-350	406.4	355.6	3.0	3.0	152.4	4.33
400-350	406.4	355.6	4.0	4.0	152.4	5.76

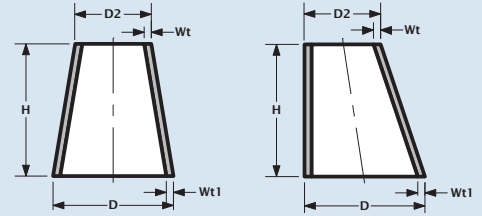
continued on next page

Concentrisch en excentrisch verloopstuk Concentric and eccentric reducer Réduction concentrique et excentrique Konzentrische und exzentrische Reduzierung



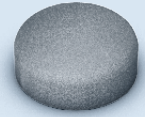
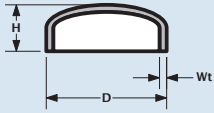
DN8 - DN600

EN / ISO



Concentric and eccentric reducer						
Nominal Pipe Size	Outside Diameter		Wall thickness		Height	Weight
	NPS	D	D2	Wt	Wt1	
-	456.0	356.0	3.0	3.0	300.0	9.08
-	456.0	406.0	3.0	3.0	150.0	4.82
450-300	457.0	323.9	2.6	3.2	381.0	5.99
450-350	457.0	355.6	2.6	3.2	381.0	7.13
450-400	457.2	406.4	2.6	3.2	381.0	8.02
450-400	457.2	406.4	3.0	3.0	152.4	4.91
-	506.0	306.0	3.0	3.0	600.0	18.16
-	506.0	406.0	3.0	3.0	300.0	10.21
500-350	508.0	355.6	2.6	3.2	508.0	15.21
500-400	508.0	406.4	2.6	3.2	508.0	17.38

Concentric and eccentric reducer						
Nominal Pipe Size	Outside Diameter		Wall thickness		Height	Weight
	NPS	D	D2	Wt	Wt1	
500-400	508.0	406.4	3.0	3.0	304.8	10.40
500-450	508.0	457.2	3.0	3.0	152.4	5.49
500-450	508.0	457.2	3.2	3.2	508.0	19.52
600-400	609.6	406.4	2.6	3.2	508.0	19.30
600-400	609.6	406.4	3.0	3.0	609.6	23.13
600-450	609.6	457.2	3.0	3.0	457.2	18.22
600-450	609.6	457.2	3.2	3.2	508.0	21.60
600-500	609.6	508.0	3.0	3.0	304.8	12.73
600-500	609.6	508.0	3.2	3.2	508.0	22.63

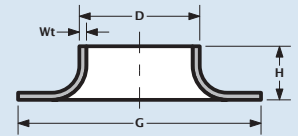
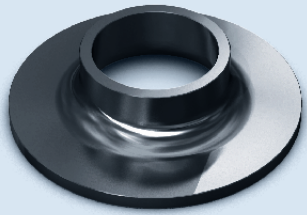


Endcap				
Nominal Pipe Size	Outside Diameter	Wall thickness	Height	Weight
DN	D	Wt	H	Kg
10	17.2	2.0	11.5	0.01
-	20.0	2.0	12.0	0.01
15	21.3	2.0	14.5 / 25.0	0.02 / 0.05
15	21.3	2.6	25.0	0.08
15	21.3	3.0	15.5	0.02
-	25.0	2.0	12.0	0.02
20	26.9	2.0	10.5 / 25.0	0.02 / 0.06
20	26.9	2.6	25.0	0.08
20	26.9	3.0	12.0	0.02
-	28.0	2.0	12.0	0.02
-	30.0	2.0	12.0	0.02
25	33.7	2.0	12.5 / 38.0	0.02 / 0.06
25	33.7	2.6	38.0	0.08
25	33.7	3.0	14.5	0.04
25	33.7	3.2	38.0	0.09
-	38.0	2.0	15.0	0.03
-	40.0	2.0	14.0	0.03
32	42.4	2.0	17.0 / 38.0	0.04 / 0.08
32	42.4	2.6	38.0	0.10
32	42.4	3.0	18.0	0.06
32	42.4	3.2	38.0	0.12
-	44.5	2.0	16.0	0.04
40	48.3	2.0	17.0 / 38.0	0.05 / 0.10
40	48.3	2.6	38.0	0.13
40	48.3	3.0	23.0	0.12
40	48.3	3.2	38.0	0.15
-	50.8	2.0	19.0	0.06
-	54.0	2.0	19.0	0.06
-	56.0	3.0	19.0	0.12
-	57.0	2.0	22.0	0.08
-	57.0	3.0	22.0	0.11
50	60.3	2.0	20.0 / 38.0	0.08 / 0.15
50	60.3	2.6	38.0	0.19
50	60.3	3.0	22.0 / 38.0	0.12 / 0.22
50	60.3	3.6	38.0	0.26
50	60.3	4.0	22.0	0.15
-	63.5	2.0	19.0	0.08
-	70.0	2.0	21.0	0.10
-	71.0	3.0	21.0	0.10
65	76.1	2.0	27.0	0.13
65	76.1	3.0	29.0 / 38.0	0.20 / 0.24
65	76.1	4.0	29.0	0.26
-	84.0	2.0	23.0	0.13
-	86.0	3.0	23.0	0.20
80	88.9	2.0	29.0	0.17
80	88.9	3.0	30.0 / 51.0	0.25 / 0.37
80	88.9	4.0	30.0	0.33
-	104.0	2.0	24.0	0.19

Endcap				
Nominal Pipe Size	Outside Diameter	Wall thickness	Height	Weight
DN	D	Wt	H	Kg
-	106.0	3.0	25.0	0.28
-	108.0	2.0	32.0	0.25
-	108.0	3.0	34.0	0.37
-	108.0	4.0	34.0	0.49
100	114.3	2.0	32.0	0.25
100	114.3	3.0	32.0 / 64.0	0.37 / 0.57
100	114.3	4.0	32.0	0.49
-	129.0	2.0	34.0	0.31
-	131.0	3.0	35.0	0.47
-	133.0	2.0	34.0	0.31
-	133.0	3.0	34.0	0.47
-	133.0	4.0	34.0	0.71
125	139.7	2.0	35.0	0.37
125	139.7	3.0	36.0 / 76.0	0.57 / 1.00
125	139.7	4.0	36.0	0.71
-	154.0	2.0	41.0	0.44
-	156.0	3.0	42.0	0.82
-	159.0	2.0	42.0	0.44
-	159.0	3.0	42.0	0.67
-	159.0	4.0	42.0	1.15
150	168.3	2.0	40.0	0.52
150	168.3	3.0	43.0 / 89.0	0.78 / 1.13
150	168.3	4.0	43.0	1.15
-	204.0	2.0	50.0	0.75
-	206.0	3.0	50.0	1.13
200	219.1	2.0	50.0	0.85
200	219.1	3.0	51.0 / 102.0	1.27 / 1.97
200	219.1	4.0	51.0	1.87
-	254.0	2.0	55.0	1.08
-	256.0	3.0	55.0	1.62
250	273.0	2.0	63.0	1.31
250	273.0	3.0	62.0 / 127.0	1.97 / 4.03
250	273.0	4.0	62.0	3.62
-	304.0	2.0	68.0	1.65
-	306.0	3.0	70.0	2.47
300	323.9	2.0	72.0	1.81
300	323.9	3.0	72.0 / 152.0	2.72 / 5.74
300	323.9	4.0	72.0	3.63
350	355.6	3.0	89.0 / 165.0	3.52 / 6.53
350	355.6	4.0	89.0	5.32
400	406.4	3.0	98.0 / 178.0	4.52 / 8.21
400	406.4	4.0	98.0	6.53
450	457.2	3.0	107.0 / 203.0	5.49 / 10.42
450	457.2	4.0	107.0	5.49
500	508.0	3.0	120.0 / 229.0	6.56 / 12.52
500	508.0	4.0	120.0	10.29
600	609.6	3.0	140.0 / 267.0	9.23 / 17.60
600	609.6	4.0	140.0	14.13



EN1092-1 TYPE 37 / ISO



Pressed collar						
Nominal Pipe Size	Outside Diameter	Wall thickness	Diameter of lap	Height	Weight	
DN	D	Wt	G	H	kg	
10	17.2	2.0	42.0	6.0	0.02	
10	17.2	2.5	40.0	7.0	0.02	
-	20.0	2.0	47.0	6.0	0.02	
15	21.3	2.0	47.0	6.0	0.03	
15	21.3	2.5	45.0	7.0	0.04	
15	21.3	3.0	47.0	6.0	0.05	
-	25.0	2.0	58.0	7.0	0.03	
20	26.9	2.0	58.0	8.0	0.04	
20	26.9	3.0	58.0	8.0	0.06	
-	28.0	2.0	68.0	8.0	0.05	
-	30.0	2.0	68.0	8.0	0.05	
-	32.0	2.0	68.0	9.0	0.06	
25	33.7	2.0	68.0	9.0	0.05	
25	33.7	3.0	68.0	9.0 / 10.0	0.08 / 0.08	
-	38.0	2.0	78.0	10.0	0.07	
32	42.4	2.0	78.0	10.0	0.10	
32	42.4	3.0	78.0	10.0 / 12.0	0.09 / 0.10	
-	44.5	2.0	90.0	10.0	0.09	
40	48.3	2.0	88.0	10.0	0.08	
40	48.3	3.0	88.0	10.0 / 15.0	0.12 / 0.13	
-	50.8	2.0	102.0	11.0	0.10	
-	54.0	2.0	102.0	12.0	0.11	
-	56.0	3.0	102.0	15.0	0.17	
-	57.0	2.0	102.0	13.0	0.11	
-	57.0	3.0	102.0	13.0	0.17	
50	60.3	2.0	102.0	12.0	0.11	
50	60.3	3.0	102.0	12.0	0.16	
50	60.3	4.0	102.0	12.0 / 20.0	0.22 / 0.25	
-	63.5	2.0	115.0	13.0	0.12	
-	70.0	2.0	122.0	12.0	0.15	
-	70.0	3.0	122.0	12.0	0.23	
-	71.0	3.0	122.0	12.0	0.23	
65	76.1	2.0	122.0	12.0	0.15	
65	76.1	3.0	122.0	12.0	0.22	
65	76.1	4.0	122.0	12.0 / 20.0	0.29 / 0.34	
-	80.0	2.0	122.0	13.0	0.15	
-	84.0	2.0	138.0	13.0	0.19	
-	86.0	3.0	138.0	15.0	0.28	
80	88.9	2.0	133.0	13.0	0.16	
80	88.9	3.0	133.0	13.0	0.28	
80	88.9	4.0	139.0	12.0 / 0.25	0.37 / 0.42	
-	101.6	2.0	150.0	14.0	0.21	
-	101.6	3.0	150.0	14.0	0.31	
-	104.0	2.0	158.0	16.0	0.24	
-	106.0	3.0	158.0	16.0	0.36	
-	108.0	2.0	158.0	14.0	0.22	
-	108.0	3.0	158.0	14.0	0.36	

Pressed collar						
Nominal Pipe Size	Outside Diameter	Wall thickness	Diameter of lap	Height	Weight	
DN	D	Wt	G	H	kg	
-	108.0	4.0	158.0	14.0	0.43	
100	114.3	2.0	158.0	14.0	0.21	
100	114.3	3.0	158.0	14.0	0.23	
100	114.3	4.0	158.0	14.0 / 0.25	0.43 / 0.49	
-	129.0	2.0	188.0	15.0	0.31	
-	131.0	3.0	188.0	20.0	0.47	
-	133.0	2.0	188.0	19.0	0.31	
-	133.0	3.0	188.0	19.0	0.47	
-	133.0	4.0	188.0	19.0	0.56	
125	139.7	2.0	184.0	15.0	0.26	
125	139.7	3.0	184.0	15.0	0.42	
125	139.7	4.0	184.0	15.0	0.56	
125	139.7	4.0	188.0	25.0	0.62	
-	154.0	2.0	212.0	19.0	0.38	
-	156.0	3.0	212.0	20.0	0.57	
-	159.0	2.0	212.0	17.0	0.34	
-	159.0	3.0	212.0	18.0	0.51	
-	159.0	4.0	212.0	18.0	0.64	
150	168.3	2.0	212.0	18.0	0.32	
150	168.3	3.0	212.0	18.0	0.48	
150	168.3	4.0	212.0	17.0 / 25.0	0.64 / 0.71	
-	204.0	2.0	268.0	21.0	0.54	
-	206.0	3.0	268.0	25.0	0.82	
200	219.1	2.0	268.0	22.0	0.46	
200	219.1	3.0	268.0	22.0	0.71	
200	219.1	4.0	270.0	18.0	0.97	
200	219.1	4.0	268.0	30.0	1.10	
-	254.0	2.0	320.0	24.0	0.71	
-	256.0	3.0	320.0	25.0	1.07	
250	273.0	2.0	320.0	23.0	0.53	
250	273.0	3.0	320.0	23.0	0.84	
250	273.0	4.0	320.0	23.0	1.11	
-	304.0	2.0	370.0	19.0	0.80	
-	306.0	3.0	370.0	21.0	1.21	
300	323.9	2.0	370.0	19.0	0.65	
300	323.9	3.0	370.0	19.0	0.96	
300	323.9	4.0	370.0	19.0	1.28	
350	355.6	3.0	430.0	21.0	1.52	
350	355.6	4.0	430.0	21.0	2.02	
400	406.4	3.0	482.0	21.0	1.78	
400	406.4	4.0	482.0	21.0	2.36	
450	457.2	3.0	532.0	25.0	2.09	
450	457.2	4.0	532.0	25.0	2.88	
500	508.0	3.0	587.0	27.0	2.29	
500	508.0	4.0	587.0	27.0	3.05	
600	609.6	3.0	685.0	26.0	2.72	
600	609.6	4.0	685.0	26.0	3.63	